

2023

MasterFlow

THE NAME YOU CAN TRUST



PRODUCT GUIDE



WWW.MASTERFLOW.UK.COM

 an IBP GROUP company

MasterFlow

THE NAME YOU CAN TRUST

Masterflow, the name you can trust, supplier of fit-for-purpose range of fittings, valves and accessories for the heating, plumbing and ventilation industry.

We are pleased to offer an extensive range of products that are designed to meet the expectations of you and your customers. These are fully backed by manufacturer guarantees, service and commitment. MasterFlow offers great value for money.

This product guide, along with technical information, WRAS listings and installation tips, can be accessed and downloaded online via our website: www.masterflow.uk.com.



Contents



End Feed Fittings 1



Flexi Hoses WRAS Approved 61



Solder Ring Fittings 11



Flexi Hoses Non WRAS Approved 65



Compression Fittings 19



Heating Products 67



DZR Compression Fittings 25



Gas Fittings 83



Chrome Plated Compression Fittings 31



Taps 91



Copper Pushfit Fittings 33



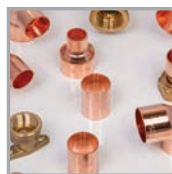
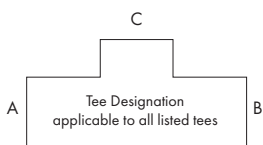
Showers 103



Yellow Brass 39



Traps & Wastes 109



Fitting Specifications 115

End Feed Fittings



- WRAS approved.
- Marked for full traceability.
- Supported by full manufacturer's warranty.
- Compliant with relevant British standards
– EN 1254/BS864.
- Manufactured using high quality copper material
in accordance with EN 1254-2.

End Feed Fittings: Straight Coupler



MasterFlow Code	Size (mm)	Bag Qty	Box Qty
MEF10080000	8	10	1000
MEF10100000	10	10	1000
MEF10150000	15	25	1000
MEF10220000	22	25	400
MEF10280000	28	10	200
MEF10350000	35	10	100
MEF10420000	42	5	100
MEF10540000	54	5	40

End Feed Fittings: Reduced Coupler



MasterFlow Code	Size (mm)	Bag Qty	Box Qty
MEF10100800	10 x 8	10	500
MEF10150800	15 x 8	10	600
MEF10151000	15 x 10	10	600
MEF10151200	15 x 12	10	600
MEF10221500	22 x 15	10	250
MEF10281500	28 x 15	10	150
MEF10282200	28 x 22	10	150
MEF10352200	35 x 22	5	150
MEF10352800	35 x 28	5	80
MEF10422200	42 x 22	5	60
MEF10422800	42 x 28	5	60
MEF10423500	42 x 35	5	70
MEF10543500	54 x 35	5	60
MEF10544200	54 x 42	2	50

End Feed Fittings: Fitting Reducer

MasterFlow Code	Size (mm)	Bag Qty	Box Qty
MEF92100800	10 x 8	10	1000
MEF92150800	15 x 8	10	500
MEF92151000	15 x 10	10	500
MEF92151200	15 x 12	10	600
MEF92221500	22 x 15	10	250
MEF92281500	28 x 15	10	150
MEF92282200	28 x 22	10	150
MEF92351500	35 x 15	5	250
MEF92352200	35 x 22	5	150
MEF92352800	35 x 28	5	200
MEF92421500	42 x 15	5	70
MEF92422200	42 x 22	5	70
MEF92422800	42 x 28	5	100
MEF92423500	42 x 35	5	100
MEF92541500	54 x 15	5	70
MEF92542200	54 x 22	5	70
MEF92542800	54 x 28	5	70
MEF92543500	54 x 35	5	54
MEF92544200	54 x 42	5	60


End Feed Fittings: Fitting Reducer (Long)

MasterFlow Code	Size (mm)	Bag Qty	Box Qty
MEF92150800L	15 x 8	10	600
MEF92151000L	15 x 10	10	500


End Feed Fittings: Imperial/Metric Coupler

MasterFlow Code	Size (mm)	Bag Qty	Box Qty
MEF92150400	1/2" x 15	10	500
MEF92220600	3/4" x 22	10	200
MEF92280800	1" x 28	10	100



End Feed Fittings: Slip Coupler



MasterFlow Code	Size (mm)	Bag Qty	Box Qty
MEF81150000	15	10	500
MEF81220000	22	10	200
MEF81280000	28	10	200

End Feed Fittings: C x FI Straight Coupler



MasterFlow Code	Size (mm)	Bag Qty	Box Qty
MEF12150400	15 x 1/2"	10	470
MEF12150600	15 x 3/4"	10	300
MEF12220600	22 x 3/4"	10	200
MEF12280800	28 x 1"	10	110
MEF12351000	35 x 1 1/4"	5	70
MEF12421200	42 x 1 1/2"	5	50
MEF12541600	54 x 2"	5	30

End Feed Fittings: C x MI Straight Coupler



MasterFlow Code	Size (mm)	Bag Qty	Box Qty
MEF11150200	15 x 1/4"	2	600
MEF11150400	15 x 1/2"	10	550
MEF11220400	22 x 1/2"	10	300
MEF11220600	22 x 3/4"	2	250
MEF11280800	28 x 1"	2	160
MEF11351000	35 x 1 1/4"	2	100
MEF11421200	42 x 1 1/2"	2	60
MEF11541600	54 x 2"	2	72

End Feed Fittings: C x FI Elbow



MasterFlow Code	Size (mm)	Bag Qty	Box Qty
MEF18150400	15 x 1/2"	2	300
MEF18220600	22 x 3/4"	2	130

End Feed Fittings: C x MI Elbow

MasterFlow Code	Size (mm)	Bag Qty	Box Qty
MEF17150400	15 x 1/2"	2	300
MEF17220600	22 x 3/4"	2	130


End Feed Fittings: 90deg. Elbow

MasterFlow Code	Size (mm)	Bag Qty	Box Qty
MEF16080000	8	10	1000
MEF16100000	10	10	1000
MEF16150000	15	25	1000
MEF16220000	22	25	300
MEF16280000	28	10	150
MEF16350000	35	5	100
MEF16420000	42	5	50
MEF16540000	54	5	20


End Feed Fittings: 90deg. Street Elbow

MasterFlow Code	Size (mm)	Bag Qty	Box Qty
MEF94100000	10	10	300
MEF94150000	15	25	500
MEF94220000	22	10	300
MEF94280000	28	10	150
MEF94350000	35	5	100
MEF94420000	42	5	50
MEF94540000	54	2	20


End Feed Fittings: Obtuse Street Elbow

MasterFlow Code	Size (mm)	Bag Qty	Box Qty
MEF95150000	15	25	600
MEF95220000	22	25	250
MEF95280000	28	10	150
MEF95350000	35	5	60
MEF95420000	42	5	40
MEF95540000	54	2	30



End Feed Fittings: End Feed Long Radius Street Elbow



MasterFlow Code	Size (mm)	Bag Qty	Box Qty
MEF97150000	15	10	300
MEF97220000	22	10	120
MEF97280000	28	5	60
MEF97350000	35	5	30
MEF97420000	42	2	20
MEF97540000	54	2	8

End Feed Fittings: 45deg. Obtuse Elbow



MasterFlow Code	Size (mm)	Bag Qty	Box Qty
MEF93150000	15	25	500
MEF93220000	22	10	300
MEF93280000	28	10	100
MEF93350000	35	10	100
MEF93420000	42	10	70
MEF93540000	54	2	26

End Feed Fittings: Wallplate Elbow



MasterFlow Code	Size (mm)	Bag Qty	Box Qty
MEF19150400	15 x 1/2"	2	220

End Feed Fittings: Part Crossover



MasterFlow Code	Size (mm)	Bag Qty	Box Qty
MEF85150000	15	10	100
MEF85220000	22	10	80

End Feed Fittings: Full Crossover

MasterFlow Code	Size (mm)	Bag Qty	Box Qty
MEF86150000	15	10	100
MEF86220000	22	10	100



End Feed Fittings: Equal Tee

MasterFlow Code	Size (mm)	Bag Qty	Box Qty
MEF20080000	8	10	800
MEF20100000	10	10	500
MEF20150000	15	25	500
MEF20220000	22	25	200
MEF20280000	28	10	100
MEF20350000	35	5	70
MEF20420000	42	5	40
MEF20540000	54	5	15



End Feed Fittings: Reduced Branch Tee

MasterFlow Code	Size (mm) A x B x C	Bag Qty	Box Qty
MEF20151510	15 x 15 x 10	10	300
MEF20222215	22 x 22 x 15	10	250
MEF20282815	28 x 28 x 15	10	100
MEF20282822	28 x 28 x 22	10	100
MEF20353515	35 x 35 x 15	5	100
MEF20353522	35 x 35 x 22	5	80
MEF20353528	35 x 35 x 28	5	70
MEF20424215	42 x 42 x 15	5	50
MEF20424222	42 x 42 x 22	5	50
MEF20424228	42 x 42 x 28	5	50
MEF20424235	42 x 42 x 35	5	40
MEF20545415	54 x 54 x 15	5	25
MEF20545422	54 x 54 x 22	5	25
MEF20545428	54 x 54 x 28	5	25
MEF20545435	54 x 54 x 35	5	25
MEF20545442	54 x 54 x 42	5	20



End Feed Fittings: Reduced End Tee



MasterFlow Code	Size (mm) A x B x C	Bag Qty	Box Qty
MEF20221522	22 x 15 x 22	10	200
MEF20222815	22 x 28 x 15	10	100
MEF20281528	28 x 15 x 28	10	100
MEF20282228	28 x 22 x 28	10	100
MEF20352235	35 x 22 x 35	5	40
MEF20352835	35 x 28 x 35	5	40
MEF20423542	42 x 35 x 42	5	40
MEF20544254	54 x 42 x 54	5	15

End Feed Fittings: Reduced End & Branch Tee



MasterFlow Code	Size (mm) A x B x C	Bag Qty	Box Qty
MEF20221515	22 x 15 x 15	10	250
MEF20281515	28 x 15 x 15	10	100
MEF20281522	28 x 15 x 22	10	100
MEF20282215	28 x 22 x 15	10	80
MEF20282222	28 x 22 x 22	10	100
MEF20352815	35 x 28 x 15	5	40
MEF20352822	35 x 28 x 22	5	40
MEF20352828	35 x 28 x 28	5	70
MEF20423528	42 x 35 x 28	5	40
MEF20423535	42 x 35 x 35	5	40
MEF20544242	54 x 42 x 42	5	20

End Feed Fittings: Both Ends Reduced Tee



MasterFlow Code	Size (mm) A x B x C	Bag Qty	Box Qty
MEF20151522	15 x 15 x 22	10	250
MEF20222228	22 x 22 x 28	10	100

End Feed Fittings: FI Tee (FI On Run)

MasterFlow Code	Size (mm) AxBxC	Bag Qty	Box Qty
MEF27150415	15 x 1/2" x 15	2	250
MEF27220422	22 x 1/2" x 22	2	120


End Feed Fittings: FI Tee (FI On Branch)

MasterFlow Code	Size (mm) AxBxC	Bag Qty	Box Qty
MEF27151504	15 x 15 x 1/2"	2	250
MEF27222204	22 x 22 x 1/2"	10	120
MEF27222206	22 x 22 x 3/4"	2	80


End Feed Fittings: Extended Street Elbow

MasterFlow Code	Size (mm) AxB	Bag Qty	Box Qty
MEF94150000E	15 x 150	5	20


End Feed Fittings: Stop End

MasterFlow Code	Size (mm)	Bag Qty	Box Qty
MEF15080000	8	10	2000
MEF15100000	10	10	1000
MEF15150000	15	10	1000
MEF15220000	22	10	400
MEF15280000	28	10	150
MEF15350000	35	2	130
MEF15420000	42	5	200
MEF15540000	54	2	50



End Feed Fittings: Straight Tap Connector

MasterFlow Code	Size (mm)	Bag Qty	Box Qty
MEF13150400	15 x 1/2"	5	500
MEF13150600	15 x 3/4"	5	200
MEF13220600	22 x 3/4"	5	200

End Feed Fittings: Bent Tap Connector

MasterFlow Code	Size (mm)	Bag Qty	Box Qty
MEF24150400	15 x 1/2"	10	250
MEF24150600	15 x 3/4"	2	200
MEF24220600	22 x 3/4"	2	150

End Feed Fittings: Bent Union Adaptor

MasterFlow Code	Size (mm)	Bag Qty	Box Qty
MEF31220800	22 x 1"	2	100

End Feed Fittings: Straight Union Adaptor

MasterFlow Code	Size (mm)	Bag Qty	Box Qty
MEF29220600	22 x 3/4"	2	150
MEF29220800	22 x 1"	2	140
MEF29280800	28 x 1"	2	80

End Feed Fittings: Air Vent Cap

MasterFlow Code	Size (mm)	Bag Qty	Box Qty
MEF99150000	15	2	500
MEF99220000	22	10	450


End Feed Fittings: U Bend

MasterFlow Code	Size (mm)	Bag Qty	Box Qty
MEFUBEND15S	15	10	450


End Feed Fittings: Pack (MEFFITPK0003)

Product Code	Contents	Size	Qty
MEF10150000	Coupler	15	60
MEF10220000	Coupler	2	10
MEF16150000	Elbow	15	60
MEF16220000	Elbow	22	20
MEF20150000	Equal Tee	15	10
MEF20220000	Equal Tee	22	10
MEF92221500	Fitting Reducer	22 x 15	10



Solder Ring Fittings

- WRAS approved.
- Marked for full traceability.
- Supported by full manufacturer's warranty.
- Compliant with relevant British standards
– EN1254/BS864.
- Manufactured using high quality copper material
in accordance with EN1254-2.



Solder Ring Fittings: Straight Coupler



MasterFlow Code	Size (mm)	Bag Qty	Box Qty
MSR10080000	8	10	1000
MSR10100000	10	10	1000
MSR10150000	15	25	1000
MSR10220000	22	25	400
MSR10280000	28	10	200
MSR10350000	35	10	100
MSR10420000	42	2	100
MSR10540000	54	5	50

Solder Ring Fittings: Reduced Coupler



MasterFlow Code	Size (mm)	Bag Qty	Box Qty
MSR10100800	10 x 8	2	2000
MSR10150800	15 x 8	2	1000
MSR10151000	15 x 10	5	1000
MSR10221500	22 x 15	10	500
MSR10281500	28 x 15	2	200
MSR10282200	28 x 22	2	200
MSR10352200	35 x 22	2	150
MSR10352800	35 x 28	2	120
MSR10422800	42 x 28	2	100
MSR10423500	42 x 35	2	70
MSR10543500	54 x 35	2	50
MSR10544200	54 x 42	2	50

Solder Ring Fittings: Fitting Reducer

MasterFlow Code	Size (mm)	Bag Qty	Box Qty
MSR91100800	10 x 8	2	2000
MSR91120800	12 x 8	2	1000
MSR91150800	15 x 8	10	800
MSR91151000	15 x 10	5	1000
MSR91151200	15 x 12	10	600
MSR91221500	22 x 15	10	500
MSR91281500	28 x 15	2	200
MSR91282200	28 x 22	2	200
MSR91351500	35 x 15	2	150
MSR91352200	35 x 22	2	140
MSR91352800	35 x 28	2	120
MSR91421500	42 x 15	2	100
MSR91422200	42 x 22	2	100
MSR91422800	42 x 28	2	100
MSR91423500	42 x 35	2	80
MSR91541500	54 x 15	2	60
MSR91542200	54 x 22	2	60
MSR91542800	54 x 28	2	60
MSR91543500	54 x 35	2	60
MSR91544200	54 x 42	2	50


Solder Ring Fittings: Reducer Long

MasterFlow Code	Size (mm)	Bag Qty	Box Qty
MSR91150800L	15 x 8	10	600
MSR91151000L	15 x 10	10	600


Solder Ring Fittings: Imperial/Metric Coupler

MasterFlow Code	Size (mm)	Bag Qty	Box Qty
MSR92150400	15 x 1/2"	2	600
MSR92220600	22 x 3/4"	2	300
MSR92280800	28 x 1"	2	150
MSR92351000	35 x 1 1/4"	2	90



Solder Ring Fittings: Slip Coupler



MasterFlow Code	Size (mm)	Bag Qty	Box Qty
MSR81150000	15	5	700
MSR81220000	22	5	300

Solder Ring Fittings: C x FI Straight Coupler



MasterFlow Code	Size (mm)	Bag Qty	Box Qty
MSR12150400	15 x 1/2"	2	470
MSR12220600	22 x 3/4"	2	300
MSR12280800	28 x 1"	2	110
MSR12351000	35 x 1 1/4"	2	70
MSR12421200	42 x 1 1/2"	2	50
MSR12541600	54 x 2"	2	26

Solder Ring Fittings: C x MI Straight Coupler



MasterFlow Code	Size (mm)	Bag Qty	Box Qty
MSR11150400	15 x 1/2"	2	550
MSR11220600	22 x 3/4"	2	250
MSR11280800	28 x 1"	2	160
MSR11351000	35 x 1 1/4"	2	100
MSR11421200	42 x 1 1/2"	2	60
MSR11541600	54 x 2"	2	30

Solder Ring Fittings: 90deg. Elbow



MasterFlow Code	Size (mm)	Bag Qty	Box Qty
MSR16080000	8	2	2500
MSR16100000	10	2	1000
MSR16150000	15	10	500
MSR16220000	22	10	200
MSR16280000	28	2	120
MSR16350000	35	2	50
MSR16420000	42	2	30
MSR16540000	54	2	14

Solder Ring Fittings: 90deg. Street Elbow

MasterFlow Code	Size (mm)	Bag Qty	Box Qty
MSR94150000	15	10	600
MSR94220000	22	5	250
MSR94280000	28	5	120



Solder Ring Fittings: 45deg. Obtuse Elbow

MasterFlow Code	Size (mm)	Bag Qty	Box Qty
MSR93150000	15	5	500
MSR93220000	22	5	200
MSR93280000	28	2	100
MSR93350000	35	2	60
MSR93420000	42	2	40
MSR93540000	54	2	18



Solder Ring Fittings: C x MI Elbow

MasterFlow Code	Size (mm)	Bag Qty	Box Qty
MSR17150400	15 x 1/2"	2	150
MSR17220600	22 x 3/4"	2	70



Solder Ring Fittings: C x FI Elbow

MasterFlow Code	Size (mm)	Bag Qty	Box Qty
MSR18150400	15 x 1/2"	2	150



Solder Ring Fittings: Wallplate Elbow


MasterFlow Code	Size (mm)	Bag Qty	Box Qty
MSR19150400	15 x 1/2"	2	220

Solder Ring Fittings: Equal Tee


MasterFlow Code	Size (mm)	Bag Qty	Box Qty
MSR20100000	10	2	1000
MSR20150000	15	10	350
MSR20220000	22	10	125
MSR20280000	28	2	70
MSR20350000	35	2	30
MSR20420000	42	2	20
MSR20540000	54	2	12

Solder Ring Fittings: Reduced Branch Tee


MasterFlow Code	Size (mm) A x B x C	Bag Qty	Box Qty
MSR20151510	15 x 15 x 10	5	200
MSR20222215	22 x 22 x 15	5	175
MSR20282815	28 x 28 x 15	2	100
MSR20282822	28 x 28 x 22	2	80
MSR20353515	35 x 35 x 15	2	50
MSR20353522	35 x 35 x 22	2	50
MSR20353528	35 x 35 x 28	2	45
MSR20424215	42 x 42 x 15	2	40
MSR20424222	42 x 42 x 22	2	35
MSR20424228	42 x 42 x 28	2	30
MSR20424235	42 x 42 x 35	2	20
MSR20545415	54 x 54 x 15	2	20
MSR20545422	54 x 54 x 22	2	20
MSR20545428	54 x 54 x 28	2	20
MSR20545435	54 x 54 x 35	2	20
MSR20545442	54 x 54 x 42	2	14

Solder Ring Fittings: Reduced End Tee

MasterFlow Code	Size (mm) A x B x C	Bag Qty	Box Qty
MSR20221522	22 x 15 x 22	5	125
MSR20222828	22 x 28 x 28	2	50
MSR20282215	28 x 22 x 15	2	50
MSR20281528	28 x 15 x 28	2	80
MSR20282228	28 x 22 x 28	2	70


Solder Ring Fittings: Reduced End & Branch Tee

MasterFlow Code	Size (mm) A x B x C	Bag Qty	Box Qty
MSR20221515	22 x 15 x 15	5	200
MSR20282222	28 x 22 x 22	2	100


Solder Ring Fittings: Both Ends Reduced Tee

MasterFlow Code	Size (mm) A x B x C	Bag Qty	Box Qty
MSR20151522	15 x 15 x 22	5	200



Solder Ring Fittings: FI Tee (FI On Branch)



MasterFlow Code	Size (mm) AxBxC	Bag Qty	Box Qty
MSR27151504	15 x 15 x 1/2"	2	250
MSR27222204	22 x 22 x 1/2"	2	140
MSR27222206	22 x 22 x 3/4"	2	140
MSR27282804	28 x 28 x 1/2"	2	70

Solder Ring Fittings: FI Tee (FI On End)



MasterFlow Code	Size (mm) AxBxC	Bag Qty	Box Qty
MSR27220422	22 x 1/2" x 22	2	140

Solder Ring Fittings: Stop End



MasterFlow Code	Size (mm)	Bag Qty	Box Qty
MSR15100000	10	5	4000
MSR15150000	15	5	1600
MSR15220000	22	5	600
MSR15280000	28	2	400
MSR15350000	35	2	150
MSR15420000	42	2	100
MSR15540000	54	2	50

Solder Ring Fittings: Straight Tap Connector



MasterFlow Code	Size (mm)	Bag Qty	Box Qty
MSR13150400	15 x 1/2"	2	450
MSR13150600	15 x 3/4"	2	200
MSR13220600	22 x 3/4"	2	200

Solder Ring Fittings: Bent Tap Connector

MasterFlow Code	Size (mm)	Bag Qty	Box Qty
MSR24150400	15 x 1/2"	2	400
MSR24220600	22 x 3/4"	2	150


Solder Ring Fittings: Bent Union Adaptor

MasterFlow Code	Size (mm)	Bag Qty	Box Qty
MSR31220800	22 x 1"	2	100


Solder Ring Fittings: Straight Union Adaptor

MasterFlow Code	Size (mm)	Bag Qty	Box Qty
MSR29220800	22 x 1"	2	200



Compression Fittings

- WRAS approved.
- Marked for full traceability.
- Supported by full manufacturer's warranty.
- Compliant with relevant British standards
– EN 1254/BS864.
- Manufactured using high quality brass material.



Compression Fittings: Straight Coupler



MasterFlow Code	Size (mm)	Bag Qty	Box Qty
M 10080000	8	10	250
M 10100000	10	10	250
M 10150000	15	10	200
M 10220000	22	10	100
M 10280000	28	10	50
M 10350000	35	2	40
M 10420000	42	2	30
M 10540000	54	2	20

Compression Fittings: Reduced Coupler



MasterFlow Code	Size (mm)	Bag Qty	Box Qty
M 10100800	10 x 8	2	250
M 10150800	15 x 8	2	200
M 10151000	15 x 10	2	250
M 10151200	15 x 12	2	200
M 10161500	16 x 15	10	200
M 10181500	18 x 15	10	200
M 10221500	22 x 15	5	150
M 10281500	28 x 15	2	100
M 10282200	28 x 22	2	100

Compression Fittings: Repair Coupler

MasterFlow Code	Size (mm)	Bag Qty	Box Qty
M10159650	15	2	100
M10228000	22	2	50



Compression Fittings: C x FI Straight Coupler

MasterFlow Code	Size (mm)	Bag Qty	Box Qty
M12080200	8 x 1/4"	2	250
M12080300	8 x 3/8"	2	250
M12100200	10 x 1/4"	2	300
M12100300	10 x 3/8"	2	300
M12100400	10 x 1/2"	2	250
M12150200	15 x 1/4"	2	200
M12150300	15 x 3/8"	2	200
M12150400	15 x 1/2"	10	200
M12150600	15 x 3/4"	5	200
M12220400	22 x 1/2"	2	150
M12220600	22 x 3/4"	2	150
M12220800	22 x 1"	2	100
M12280800	28 x 1"	2	100
M12351000	35 x 1 1/4"	2	40
M12421200	42 x 1 1/2"	2	40
M12541600	54 x 2"	2	20



Compression Fittings: C x MI Straight Coupler



MasterFlow Code	Size (mm)	Bag Qty	Box Qty
M11080200	8 x 1/4"	2	300
M11080300	8 x 3/8"	2	300
M11100200	10 x 1/4"	2	300
M11100300	10 x 3/8"	2	300
M11100400	10 x 1/2"	2	250
M11150200	15 x 1/4"	2	200
M11150300	15 x 3/8"	2	200
M11150400	15 x 1/2"	10	200
M11150400T (Tapered)	15 x 1/2"	10	200
M11150600	15 x 3/4"	5	200
M11220400	22 x 1/2"	2	150
M11220600	22 x 3/4"	2	150
M11220600T (Tapered)	22 x 3/4"	2	150
M11220800	22 x 1"	2	100
M11280600T (Tapered)	28 x 3/4"	2	100
M11280800	28 x 1"	2	100
M11281000	28 x 1 1/4"	2	60
M11351000	35 x 1 1/4"	2	30
M11421200	42 x 1 1/2"	2	40
M11541600	54 x 2"	2	14

Compression Fittings: C x FI Elbow



MasterFlow Code	Size (mm)	Bag Qty	Box Qty
M18150400	15 x 1/2"	5	150
M18150600	15 x 3/4"	5	150
M18220600	22 x 3/4"	5	100
M18220800	22 x 1"	5	100
M18280800	28 x 1"	2	50
M18351000	35 x 1 1/4"	2	30
M18421200	42 x 1 1/2"	2	24
M18541600	54 x 2"	2	14

Compression Fittings: C x MI Elbow



MasterFlow Code	Size (mm)	Bag Qty	Box Qty
M17100300	10 x 3/8"	2	200
M17150400	15 x 1/2"	5	150
M17150600	15 x 3/4"	5	150
M17220600	22 x 3/4"	5	100
M17220600D (Drain off)	22 x 3/4"	2	50
M17220800	22 x 1"	5	100
M17280800	28 x 1"	2	50
M17280800T (Tapered)	28 x 1"	2	50
M17351000	35 x 1 1/4"	2	30
M17421200	42 x 1 1/2"	2	30
M17541600	54 x 2"	2	14

Compression Fittings: 90deg. Elbow

MasterFlow Code	Size (mm)	Bag Qty	Box Qty
M16080000	8	10	300
M16100000	10	10	250
M16150000	15	10	200
M16220000	22	10	100
M16280000	28	5	50
M16350000	35	2	40
M16420000	42	2	26
M16540000	54	2	10


Compression Fittings: Wallplate Elbow

MasterFlow Code	Size (mm)	Bag Qty	Box Qty
M19150400	15 x 1/2"	2	100
M19220600	22 x 3/4"	2	50


Compression Fittings: Equal Tee

MasterFlow Code	Size (mm)	Bag Qty	Box Qty
M20080000	8	10	250
M20100000	10	10	200
M20150000	15	10	100
M20220000	22	10	50
M20280000	28	5	40
M20350000	35	2	26
M20420000	42	2	14
M20540000	54	2	10


Compression Fittings: Reducing Tee

MasterFlow Code	Size (mm) A x B x C	Bag Qty	Box Qty
M20151510	15 x 15 x 10	2	100
M20151522	15 x 15 x 22	2	100
M20222215	22 x 22 x 15	2	50
M20221522	22 x 15 x 22	2	50
M20221515	22 x 15 x 15	2	50
M20282815	28 x 28 x 15	2	50
M20282822	28 x 28 x 22	2	40
M20282222	28 x 22 x 22	2	40
M20281528	28 x 15 x 28	2	40
M20282228	28 x 22 x 28	2	40



Compression Fittings: C x C x FI Reducing Tee



MasterFlow Code	Size (mm) AxBxC	Bag Qty	Box Qty
M27151504	15 x 15 x 1/2"	2	100
M27150415	15 x 1/2" x 15	2	50
M27222204	22 x 22" x 1/2"	2	50
M27222206	22 x 22 x 3/4"	2	40
M27282804	28 x 28 x 1/2"	2	40

Compression Fittings: Stop End



MasterFlow Code	Size (mm)	Bag Qty	Box Qty
M15080000	8	2	300
M15100000	10	10	300
M15150000	15	10	300
M15220000	22	10	200
M15280000	28	2	150
M15350000	35	2	100
M15420000	42	2	50
M15540000	54	2	40

Compression Fittings: Bent Tap Connector



MasterFlow Code	Size (mm)	Bag Qty	Box Qty
M24150400	15 x 1/2"	2	150
M24220600	22 x 3/4"	2	100

Compression Fittings: Straight Tap Connector



MasterFlow Code	Size (mm)	Bag Qty	Box Qty
M13150400	15 x 1/2"	2	200
M13150600	15 x 3/4"	2	150
M13220600	22 x 3/4"	2	100

Compression Fittings: Flanged Tank Connector

MasterFlow Code	Size (mm)	Bag Qty	Box Qty
M14150000	15	2	150
M14220000	22	2	100
M14280000	28	2	50
M14350000	35	2	24
M14420000	42	2	20
M14540000	54	2	14



Compression Fittings: Compression Nut

MasterFlow Code	Size (mm)	Bag Qty	Box Qty
M22150000	15	10	500
M22220000	22	10	400
M22280000	28	2	300



Compression Fittings: Blank Disc

MasterFlow Code	Size (mm)	Bag Qty	Box Qty
MBD15	15	10	500
MBD22	22	2	400
MBD28	28	2	200



DZR Compression Fittings

- WRAS approved.
- Marked for full traceability.
- Supported by full manufacturer's warranty.
- Compliant with relevant British standards - EN 1254/BS864.
- Manufactured using high quality DZR brass material.



DZR Compression Fittings: Straight Coupler



MasterFlow Code	Size (mm)	Bag Qty	Box Qty
M10080000DZR	8	2	250
M10100000DZR	10	10	250
M10150000DZR	15	10	200
M10220000DZR	22	10	100
M10280000DZR	28	10	50
M10350000DZR	35	2	40
M10420000DZR	42	2	30
M10540000DZR	54	2	20

DZR Compression Fittings: Reduced Coupler



MasterFlow Code	Size (mm)	Bag Qty	Box Qty
M10100800DZR	10 x 8	2	250
M10150800DZR	15 x 8	2	250
M10151000DZR	15 x 10	2	250
M10221500DZR	22 x 15	5	150
M10281500DZR	28 x 15	5	100
M10282200DZR	28 x 22	5	100

DZR Compression Fittings: Repair Coupler

MasterFlow Code	Size (mm)	Bag Qty	Box Qty
M10159650DZR	15	2	100
M10228000DZR	22	2	50



DZR Compression Fittings: C x FI Straight Coupler

MasterFlow Code	Size (mm)	Bag Qty	Box Qty
M12080200DZR	8 x 1/4"	2	250
M12080300DZR	8 x 3/8"	2	200
M12100200DZR	10 x 1/4"	2	300
M12100300DZR	10 x 3/8"	2	300
M12100400DZR	10 x 1/2"	2	250
M12120300DZR	12 x 3/8"	2	250
M12120400DZR	12 x 1/2"	2	250
M12150200DZR	15 x 1/4"	2	200
M12150300DZR	15 x 3/8"	2	200
M12150400DZR	15 x 1/2"	10	200
M12150600DZR	15 x 3/4"	5	200
M12220400DZR	22 x 1/2"	2	150
M12220600DZR	22 x 3/4"	2	150
M12220800DZR	22 x 1"	2	100
M12280800DZR	28 x 1"	2	100
M12351000DZR	35 x 1 1/4"	2	30
M12421200DZR	42 x 1 1/2"	2	20
M12541600DZR	54 x 2"	2	20



DZR Compression Fittings: C x FI Elbow

MasterFlow Code	Size (mm)	Bag Qty	Box Qty
M18150400DZR	15 x 1/2"	5	150
M18150600DZR	15 x 3/4"	5	100
M18220600DZR	22 x 3/4"	5	100
M18220800DZR	22 x 1"	5	100
M18280800DZR	28 x 1"	2	50



DZR Compression Fittings: C x MI Straight Coupler


MasterFlow Code	Size (mm)	Bag Qty	Box Qty
M11080200DZR	8 x 1/4"	2	300
M11080300DZR	8 x 3/8"	2	250
M11080400DZR	8 x 1/2"	2	250
M11100200DZR	10 x 1/4"	2	300
M11100300DZR	10 x 3/8"	2	300
M11100400DZR	10 x 1/2"	2	250
M11150200DZR	15 x 1/4"	2	200
M11150300DZR	15 x 3/8"	2	200
M11150400DZR	15 x 1/2"	10	200
M11150600DZR	15 x 3/4"	5	200
M11220400DZR	22 x 1/2"	2	150
M11220600DZR	22 x 3/4"	2	150
M11220800DZR	22 x 1"	2	100
M11280800DZR	28 x 1"	2	100
M11351000DZR	35 x 1 1/4"	2	30
M11421200DZR	42 x 1 1/2"	2	20
M11541600DZR	54 x 2"	2	10

DZR Compression Fittings: C x MI Elbow


MasterFlow Code	Size (mm)	Bag Qty	Box Qty
M17150400DZR	15 x 1/2"	5	150
M17150600DZR	15 x 3/4"	5	100
M17220600DZR	22 x 3/4"	5	100
M17220600DODZR (c/w drainoff)	22 x 3/4"	2	50
M17220800DZR	22 x 1"	5	100
M17280800DZR	28 x 1"	2	50

DZR Compression Fittings: 90deg. Elbow


MasterFlow Code	Size (mm)	Bag Qty	Box Qty
M16080000DZR	8	10	500
M16100000DZR	10	10	250
M16150000DZR	15	10	200
M16220000DZR	22	10	100
M16280000DZR	28	5	50
M16350000DZR	35	2	40
M16420000DZR	42	2	26
M16540000DZR	54	2	10

DZR Compression Fittings: Wallplate Elbow

MasterFlow Code	Size (mm)	Bag Qty	Box Qty
M19150400DZR	15 x 1/2"	2	100
M19220600DZR	22 x 3/4"	2	50



DZR Compression Fittings: Equal Tee

MasterFlow Code	Size (mm)	Bag Qty	Box Qty
M20100000DZR	10	10	200
M20150000DZR	15	10	100
M20220000DZR	22	10	50
M20280000DZR	28	2	40
M20350000DZR	35	2	26
M20420000DZR	42	2	16
M20540000DZR	54	2	10



DZR Compression Fittings: Reducing Tee

MasterFlow Code	Size (mm)	Bag Qty	Box Qty
M20151510DZR	15 x 15 x 10	2	100
M20151522DZR	15 x 15 x 22	2	100
M20221515DZR	22 x 15 x 15	2	50
M20221522DZR	22 x 15 x 22	2	50
M20222215DZR	22 x 22 x 15	2	50
M20281528DZR	28 x 15 x 28	2	40
M20282222DZR	28 x 22 x 22	2	40
M20282228DZR	28 x 22 x 28	2	40
M20282822DZR	28 x 28 x 22	2	40



DZR Compression Fittings: C x C x FI Reducing Tee


MasterFlow Code	Size (mm)	Bag Qty	Box Qty
M27151504DZR	15 x 15 x 1/2"	2	100
M27150415DZR	15 x 1/2" x 15	2	50
M27222204DZR	22 x 22 x 1/2"	2	50
M27222206DZR	22 x 22 x 3/4"	2	50

DZR Compression Fittings: Stop End


MasterFlow Code	Size (mm)	Bag Qty	Box Qty
M15080000DZR	8	10	500
M15100000DZR	10	10	500
M15150000DZR	15	10	300
M15220000DZR	22	10	200
M15280000DZR	28	2	150
M15350000DZR	35	2	100
M15420000DZR	42	2	50
M15540000DZR	54	2	40

DZR Compression Fittings: Bent Tap Connector


MasterFlow Code	Size (mm)	Bag Qty	Box Qty
M24150400DZR	15 x 1/2"	2	150
M24220600DZR	22 x 3/4"	2	100

DZR Compression Fittings: Straight Tap Connector

MasterFlow Code	Size (mm)	Bag Qty	Box Qty
M13150400DZR	15 x 1/2"	2	200
M13150600DZR	15 x 3/4"	2	150
M13220600DZR	22 x 3/4"	2	100


DZR Compression Fittings: Flanged Tank Connector

MasterFlow Code	Size (mm)	Bag Qty	Box Qty
M14150000DZR	15	2	150
M14220000DZR	22	2	100
M14280000DZR	28	2	50
M14350000DZR	35	2	24
M14420000DZR	42	2	20
M14540000DZR	54	2	14



Chrome Plated Compression Fittings

- WRAS approved.
- Marked for full traceability.
- Supported by full manufacturer's warranty.
- Compliant with relevant British standards – EN1254.
- Manufactured using high quality brass and chrome plated material.



Chrome Plated Compression Fittings: Straight Coupler



MasterFlow Code	Size (mm)	Bag Qty	Box Qty
M10150000P	15	5	200
M10220000P	22	5	100
M10280000P	28	2	50
M10350000P	35	2	40
M10420000P	42	2	30
M10540000P	54	2	20

Chrome Plated Compression Fittings: C x FI Straight Coupler



MasterFlow Code	Size (mm)	Bag Qty	Box Qty
M12150400P	15 x 1/2"	2	200
M12220600P	22 x 3/4"	2	150
M12280800P	28 x 1"	2	80

Chrome Plated Compression Fittings: C x MI Straight Coupler

MasterFlow Code	Size (mm)	Bag Qty	Box Qty
M11150400P	15 x 1/2"	2	200
M11220600P	22 x 3/4"	2	150
M11220800P	22 x 1"	2	150
M11280800P	28 x 1"	2	100
M11351000P	35 x 1 1/4"	2	30


Chrome Plated Compression Fittings: C x FI Elbow

MasterFlow Code	Size (mm)	Bag Qty	Box Qty
M18150400P	15 x 1/2"	2	150


Chrome Plated Compression Fittings: C x MI Elbow

MasterFlow Code	Size (mm)	Bag Qty	Box Qty
M17150400P	15 x 1/2"	2	150



Chrome Plated Compression Fittings: 90deg. Elbow

MasterFlow Code	Size (mm)	Bag Qty	Box Qty
M16150000P	15	5	200
M16220000P	22	5	100
M16280000P	28	2	50
M16350000P	35	2	40
M16420000P	42	2	24
M16540000P	54	2	10

Chrome Plated Compression Fittings: Wallplate Elbow

MasterFlow Code	Size (mm)	Bag Qty	Box Qty
M19150400P	15 x 1/2"	2	100

Chrome Plated Compression Fittings: Equal Tee

MasterFlow Code	Size (mm)	Bag Qty	Box Qty
M20150000P	15	5	100
M20220000P	22	5	50
M20280000P	28	2	40
M20350000P	35	2	26
M20420000P	42	2	14
M20540000P	54	2	10

Chrome Plated Compression Fittings: Reducing Tee

MasterFlow Code	Size (mm) A x B x C	Bag Qty	Box Qty
M20222215P	22 x 22 x 15	2	50

**Chrome Plated Compression Fittings: Stop End**

MasterFlow Code	Size (mm)	Bag Qty	Box Qty
M15150000P	15	2	300
M15220000P	22	2	200



Copper Pushfit Fittings

- WRAS approved.
- Marked for full traceability.
- Supported by full manufacturer's warranty.
- Compliant with relevant British standards
– EN 1254/BS864.
- Manufactured using high quality copper material
in accordance with EN 1254-2.



Copper Pushfit Fittings: Straight Coupler



MasterFlow Code	Size (mm)	Bag Qty	Box Qty
MPFR 10100000	10	5	100
MPFS 10150000	15	5	100
MPFS 10220000	22	5	50
MPFR 10280000	28	1	20

Copper Pushfit Fittings: Elbow



MasterFlow Code	Size (mm)	Bag Qty	Box Qty
MPFR 16100000	10	5	100
MPFS 16150000	15	5	75
MPFS 16220000	22	5	40
MPFR 16280000	28	1	10

Copper Pushfit Fittings: Female Wall Plate Elbow

MasterFlow Code	Size (mm)	Bag Qty	Box Qty
MPFR19150400	15 x 1/2"	5	50


Copper Pushfit Fittings: Tee - Equal

MasterFlow Code	Size (mm)	Bag Qty	Box Qty
MPFR20100000	10	5	100
MPFS20150000	15	5	50
MPFS20220000	22	5	25
MPFR20280000	28	1	10


Copper Pushfit Fittings: Tee - Reduced Branch

MasterFlow Code	Size (mm) A x B x C	Bag Qty	Box Qty
MPFS20222215	22 x 22 x 15	5	25
MPFR20282822	28 x 28 x 22	1	10


Copper Pushfit Fittings: Tee - Reduced End

MasterFlow Code	Size (mm) A x B x C	Bag Qty	Box Qty
MPFR20221522	22 x 15 x 22	5	50



Copper Pushfit Fittings: Tee - Reduced End & Branch



MasterFlow Code	Size (mm) A x B x C	Bag Qty	Box Qty
MPFR20221515	22 x 15 x 15	5	25

Copper Pushfit Fittings: Fitting Reducer



MasterFlow Code	Size (mm)	Bag Qty	Box Qty
MPFR92151000	15 x 10	5	100
MPFR92221500	22 x 15	5	100
MPFR92282200	28 x 22	1	20

Copper Pushfit Fittings: Straight Tap Connector



MasterFlow Code	Size (mm)	Bag Qty	Box Qty
MPFR13150400	15 x 1/2"	1	50
MPFR13220600	22 x 3/4"	5	50

Copper Pushfit Fittings: Bent Tap Connector



MasterFlow Code	Size (mm)	Bag Qty	Box Qty
MPFR24150400	15 x 1/2"	5	100

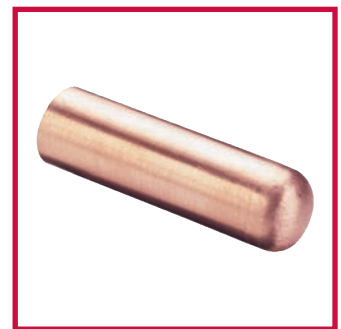
Copper Pushfit Fittings: Stop End

MasterFlow Code	Size (mm)	Bag Qty	Box Qty
MPFR15100000	10	5	100
MPFS15150000	15	5	100
MPFS15220000	22	5	75
MPFR15280000	28	1	20



Copper Pushfit Fittings: Blanking Plug

MasterFlow Code	Size (mm)	Bag Qty	Box Qty
MPFRBP1500	15	5	150



Copper Pushfit Fittings: Male Straight Connector

MasterFlow Code	Size (mm)	Bag Qty	Box Qty
MPFR11150400	15 x 1/2"	5	100
MPFR11220600	22 x 3/4"	5	50
MPFR11280800	28 x 1"	1	20
MPFR11281000	28 x 1 1/4"	1	20



Copper Pushfit Fittings: Female Straight Connector

MasterFlow Code	Size (mm)	Bag Qty	Box Qty
MPFR12150400	15 x 1/2"	5	100
MPFR12220600	22 x 3/4"	5	50
MPFR12280800	28 x 1"	1	20
MPFR12281000	28 x 1 1/4"	1	20



Copper Pushfit Fittings: Male Plain Tail Adaptor



MasterFlow Code	Size (mm)	Bag Qty	Box Qty
MPFN208G220600	22 x 3/4"	5	50

Copper Pushfit Fittings: Tank Connector



MasterFlow Code	Size (mm)	Bag Qty	Box Qty
MPFR29150600	22 x 3/4"	5	25

Copper Pushfit Fittings: Telescopic Connector - Double



MasterFlow Code	Size (mm)	Bag Qty	Box Qty
MPFNTC1500D	15	1	6
MPFNTC2200D	22	1	6

Copper Pushfit Fittings: Telescopic Connector - Single



MasterFlow Code	Size (mm)	Bag Qty	Box Qty
MPFNTC1500S	15	1	6
MPFNTC2200S	22	1	6
MPFNTC2800S	28	1	5

Copper Pushfit Fittings: Drain Off Cock - Type A

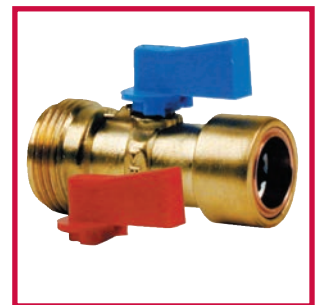
MasterFlow Code	Size (mm)	Bag Qty	Box Qty
MPFNDA1500	15	10	100


Copper Pushfit Fittings: Isolating Valve

MasterFlow Code	Size (mm)	Bag Qty	Box Qty
MPFR281500	15	2	50


Copper Pushfit Fittings: Straight Washing Machine Valve

MasterFlow Code	Size (mm)	Bag Qty	Box Qty
MPFRWM1506	15 x 3/4"	1	50


Copper Pushfit Fittings: Lever Ball Valve

MasterFlow Code	Size (mm)	Bag Qty	Box Qty
MPFR692200	22	1	10


Copper Pushfit Fittings: Release Tool

MasterFlow Code	Size (mm) A x B x C	Bag Qty	Box Qty
MPFRRT	22 x 15 x 10	1	25



Yellow Brass

- WRAS Approved (where applicable*).
- Marked for full traceability.
- Supported by full manufacturer's warranty.
- Compliant with relevant British standards.
- Manufactured using high quality brass material.

*See website for further details



Yellow Brass Fittings: Poly Shank Adaptor



MasterFlow Code	Size (mm)	Bag Qty	Box Qty
MPSA2015	20 x 15	1	50
MPSA2022	20 x 22	1	50
MPSA2515	25 x 15	1	50
MPSA2522	25 x 22	1	50

Yellow Brass Fittings: Brass Blank Nut



MasterFlow Code	Size (mm)	Bag Qty	Box Qty
M25020000	1/4"	5	500
M25030000	3/8"	5	500
M25040000	1/2"	10	350
M25060000	3/4"	10	250
M25080000	1"	2	100
M25100000	1 1/4"	2	100
M25120000	1 1/2"	2	50
M25160000	2"	1	50

Yellow Brass Fittings: Copper Olives

MasterFlow Code	Size (mm)	Bag Qty	Box Qty
M23080000C	8	10	2500
M23100000C	10	10	2500
M23120000C	12	10	2000
M23150000C	15	10	2000
M23200000C	20	10	1000
M23220000C	22	10	1000
M23250000C	25	10	500
M23280000C	28	10	500
M23060000C	3/4"	10	500



Yellow Brass Fittings: Brass Olives

MasterFlow Code	Size (mm)	Bag Qty	Box Qty
M23080000	8	10	2500
M23100000	10	10	2500
M23120000	12	10	2000
M23150000	15	10	2000
M23200000	20	10	1000
M23220000	22	10	1000
M23250000	25	10	500
M23280000	28	10	500
M23060000	3/4"	10	500
M23350000	35	50	500
M23420000	42	20	200
M23540000	54	15	150



Yellow Brass Fittings: 3 Part Reducing Set



MasterFlow Code	Size (mm)	Bag Qty	Box Qty
M3RS1008	10 x 8	10	500
M3RS1508	15 x 8	5	500
M3RS1510	15 x 10	5	500
M3RS1512	15 x 12	5	250
M3RS2215	22 x 15	5	250
M3RS2815	28 x 15	5	250
M3RS2822	28 x 22	5	250
M3RS3515	35 x 15	5	150
M3RS3522	35 x 22	5	100
M3RS3528	35 x 28	5	100
M3RS4215	42 x 15	2	100
M3RS4222	42 x 22	2	100
M3RS4235	42 x 35	2	100
M3RS5415	54 X 15	1	100
M3RS5422	54 x 22	1	100
M3RS5428	54 x 28	1	70
M3RS5435	54 x 35	1	70
M3RS5442	54 x 42	1	70

Yellow Brass Fittings: Lead Loc



MasterFlow Code	Size (mm)	Bag Qty	Box Qty
MLL03515	15 x 3/8" x 5lb	1	50
MLL04615	15 x 1/2" x 6lb	1	50
MLL04715	15 x 1/2" x 7lb	1	50
MLL06922	22 x 3/4" x 9lb	1	50

Yellow Brass Fittings: Brass Bush

MasterFlow Code	Size (mm)	Bag Qty	Box Qty
MBB020100	1/4" x 1/8"	5	500
MBB030100	3/8" x 1/8"	5	500
MBB030200	3/8" x 1/4"	5	500
MBB040100	1/2" x 1/8"	5	500
MBB040200	1/2" x 1/4"	5	500
MBB040200T	1/2" x 1/4"	5	500
MBB040300	1/2" x 3/8"	5	500
MBB060200	3/4" x 1/4"	5	250
MBB060300	3/4" x 3/8"	5	250
MBB060400	3/4" x 1/2"	5	250
MBB080400	1 x 1/2"	5	200
MBB080600	1 x 3/4"	5	200
MBB100400	1 1/4 x 1/2"	2	100
MBB100600	1 1/4 x 3/4"	2	100
MBB100800	1 1/4 x 1"	2	100
MBB120400	1 1/2 x 1/2"	2	50
MBB120600	1 1/2 x 3/4"	2	50
MBB120800	1 1/2 x 1"	2	50
MBB121000	1 1/2 x 1 1/4"	2	50
MBB160400	2 x 1/2"	2	24
MBB160600	2 x 3/4"	2	24
MBB160800	2 x 1"	2	24
MBB161000	2 x 1 1/4"	2	24
MBB161200	2 x 1 1/2"	2	24



Yellow Brass Fittings: Running Nipple

MasterFlow Code	Size (mm)	Bag Qty	Box Qty
MBRN02	1/4"	5	500
MBRN03	3/8"	5	500
MBRN04	1/2"	5	250
MBRN06	3/4"	2	200
MBRN08	1"	2	100
MBRN10	1 1/4"	2	50
MBRN12	1 1/2"	2	24
MBRN16	2"	2	24



Yellow Brass Fittings: Hexagon Nipple


MasterFlow Code	Size (mm)	Bag Qty	Box Qty
MBHN01	1/8"	5	500
MBHN02	1/4"	5	500
MBHN03	3/8"	5	500
MBHN04	1/2"	5	250
MBHN04P (Chrome)	1/2"	5	250
MBHN06	3/4"	5	200
MBHN08	1"	5	100
MBHN10	1 1/4"	2	50
MBHN12	1 1/2"	2	24
MBHN16	2"	2	24

Yellow Brass Fittings: Reducing Hexagon Nipple


MasterFlow Code	Size (mm)	Bag Qty	Box Qty
MBRHN0201	1/4 x 1/8"	5	500
MBRHN0301	3/8 x 1/8"	5	500
MBRHN0302	3/8 x 1/4"	5	500
MBRHN0401	1/2" x 1/8"	5	250
MBRHN0402	1/2" x 1/4"	5	250
MBRHN0403	1/2" x 3/8"	5	250
MBRHN0604	3/4 x 1/2"	2	200
MBRHN0804	1 x 1/2"	2	200
MBRHN0806	1 x 3/4"	2	100
MBRHN1006	1 1/4 x 3/4"	5	100
MBRHN1008	1 1/4 x 1"	5	50
MBRHN1208	1 1/2 x 1"	5	50
MBRHN1210	1 1/2 x 1 1/4"	5	50
MBRHN1608	2 x 1"	2	24
MBRHN1610	2 x 1 1/4"	2	24
MBRHN1612	2 x 1 1/2"	2	24

Yellow Brass Fittings: Barrel Nipple

MasterFlow Code	Size (mm)	Bag Qty	Box Qty
MBBN01	1/8"	5	500
MBBN02	1/4"	5	500
MBBN03	3/8"	5	500
MBBN04	1/2"	5	250
MBBN06	3/4"	5	250
MBBN08	1"	2	100
MBBN10	1 1/4"	2	50
MBBN12	1 1/2"	2	24
MBBN16	2"	2	24



Yellow Brass Fittings: Flanged Plug

MasterFlow Code	Size (mm)	Bag Qty	Box Qty
MBFPO1	1/8"	5	500
MBFPO2	1/4"	5	500
MBFPO3	3/8"	5	500
MBFPO4	1/2"	5	250
MBFPO6	3/4"	5	250
MBFPO8	1"	5	100
MBFP10	1 1/4"	2	100
MBFP12	1 1/2"	2	50
MBFP16	2"	2	24



Yellow Brass Fittings: F x F Brass Sockets

MasterFlow Code	Size (mm)	Bag Qty	Box Qty
MBS02	1/4"	5	500
MBS03	3/8"	5	500
MBS04	1/2"	5	250
MBS06	3/4"	5	200
MBS08	1"	5	100
MBS10	1 1/4"	2	50
MBS12	1 1/2"	2	24
MBS16	2"	2	24



Yellow Brass Fittings: Spacer Nipple


MasterFlow Code	Size (mm)	Bag Qty	Box Qty
MBSN01	1/8"	5	500
MBSN02	1/4"	5	500
MBSN03	3/8"	5	500
MBSN04	1/2"	5	250
MBSN06	3/4"	5	250
MBSN08	1"	5	100
MBSN10	1 1/4"	2	50
MBSN12	1 1/2"	2	24
MBSN16	2"	2	24

Yellow Brass Fittings: Bsp Wide Flanged Backnuts


MasterFlow Code	Size (mm)	Bag Qty	Box Qty
MWFB04	1/2"	5	250
MWFB06	3/4"	5	250
MWFB08	1"	5	200
MWFB10	1 1/4"	2	100
MWFB12	1 1/2"	2	100

Yellow Brass Fittings: Stopcock F x F


MasterFlow Code	Size (mm)	Bag Qty	Box Qty
M34040000	1/2"	1	50
M34060000	3/4"	1	25
M34080000	1"	1	20
M34100000	1 1/4"	1	10
M34120000	1 1/2"	1	5
M34160000	2"	1	5

Yellow Brass: Stopcock BS 1010 C x C


MasterFlow Code	Size (mm)	Bag Qty	Box Qty
M34150000	15	1	50
M34220000	22	1	25
M34280000	28	1	20
M34350000	35	1	8
M34420000	42	1	6
M34540000	54	1	4

DZR: Stopcock C x C

MasterFlow Code	Size (mm)	Bag Qty	Box Qty
M34150000DZR	15	1	50
M34220000DZR	22	1	25
M34280000DZR	28	1	20


DZR: DZR Poly Stopcock

MasterFlow Code	Size (mm)	Bag Qty	Box Qty
M35222500DZR	22 x 25	1	25


Yellow Brass: Brass Poly Stopcock

MasterFlow Code	Size (mm)	Bag Qty	Box Qty
M35152000	15 x 20	1	40
M35200000	20 x 20	1	40
M35152500	15 x 25	1	25
M35222500	22 x 25	1	25
M35250000	25 x 25	1	25


Yellow Brass: Gatevalve C x C

MasterFlow Code	Size (mm)	Bag Qty	Box Qty
M33150000LP	15	1	60
M33220000LP	22	1	40
M33280000LP	28	1	30



Brass PN16: Gatevalve C x C Bs



MasterFlow Code	Size (mm)	Bag Qty	Box Qty
M33150000*	15	1	54
M33220000*	22	1	32
M33280000*	28	1	21
M33350000	35	1	10
M33420000	42	1	8
M33540000	54	1	6

Yellow Brass: Gatevalve F x F



MasterFlow Code	Size (mm)	Bag Qty	Box Qty
M33030000	3/8"	1	50
M33040000	1/2"	1	50
M33060000	3/4"	1	25
M33080000	1"	1	20
M33100000	1 1/4"	1	10
M33120000	1 1/2"	1	10
M33160000	2"	1	5

Yellow Brass: Lockshield Gatevalve C x C



MasterFlow Code	Size (mm)	Bag Qty	Box Qty
M33150000LPLK	15	1	50
M33220000LPLK	22	1	50
M33280000LPLK	28	1	40

Yellow Brass: Type A Drain Off Cock



MasterFlow Code	Size (mm)	Bag Qty	Box Qty
MDA04	1/2"	1	200
MDA06	3/4"	1	100
MDA04DZR	1/2"	1	200

Yellow Brass: Type A Drain Off Cock - Capillary

MasterFlow Code	Size (mm)	Bag Qty	Box Qty
MDA15	15	5	200



Yellow Brass: Type A Drain Off Cock - Capillary Extended

MasterFlow Code	Size (mm)	Bag Qty	Box Qty
MDA15E	15	5	200



Yellow Brass: Type B Drain Off Cock

MasterFlow Code	Size (mm)	Bag Qty	Box Qty
MDB04	1/2"	1	200



Yellow Brass: Type B Drain Off Cock

MasterFlow Code	Size (mm)	Bag Qty	Box Qty
MDB15	15	5	200



Yellow Brass: Bibcock with Hose Union



MasterFlow Code	Size (mm)	Bag Qty	Box Qty
MBHU04	1/2"	1	40
MBHU06	3/4"	1	25
MBHU04DCV	1/2"	1	40
MBHU06DCV	3/4"	1	25

Yellow Brass: Wall Plate And Copper Tail



MasterFlow Code	Size (mm)	Bag Qty	Box Qty
MWPCT1504350	15 x 1/2" x 350	1	20
MWPCT1504600	15 x 1/2" x 600	1	20

Yellow Brass: Hose Union Nut & Tail for Bibcock



MasterFlow Code	Size (mm)	Bag Qty	Box Qty
MHUNT04	1/2"	1	200
MHUNT06	3/4"	1	100

Yellow Brass: Butterfly Ball Valve



MasterFlow Code	Size (mm)	Bag Qty	Box Qty
M28150000BUT	15	1	70
M28220000BUT	22	1	50
M28280000BUT	28	1	30

Yellow Brass: Full Bore Lever Ball Valve C x C

MasterFlow Code	Size (mm)	Bag Qty	Box Qty
M69150000FB	15	1	70
M69220000FB	22	1	50
M69280000FB	28	1	30
M69350000FB	35	1	12
M69420000FB	42	1	8
M69540000FB	54	1	4


Yellow Brass: Lever Ball Valve C x C LP (Black Handle)

MasterFlow Code	Size (mm)	Bag Qty	Box Qty
M69150000LP	15	1	70
M69150000LPDZR	15	5	100
M69220000LP	22	1	50
M69220000FBDZR	22	1	50
M69280000LP	28	1	30


Yellow Brass: Lever Ball Valve C x C LP (Blue Handle)

MasterFlow Code	Size (mm)	Bag Qty	Box Qty
M69150000LPB	15	1	70
M69220000LPB	22	1	50
M69280000LPB	28	1	30


Yellow Brass: Lever Ball Valve C x C LP (Red Handle)

MasterFlow Code	Size (mm)	Bag Qty	Box Qty
M69150000LPR	15	1	70
M69220000LPR	22	1	50
M69280000LPR	28	1	30



Yellow Brass: Lever Ball Valve F x F (Water only)



MasterFlow Code	Size (mm)	Bag Qty	Box Qty
M44020200	1/4"	1	120
M44030300	3/8"	1	120
M44040400	1/2"	1	90
M44060600	3/4"	1	72
M44080800	1"	1	30
M44101000	1 1/4"	1	21
M44121200	1 1/2"	1	10
M44161600	2"	1	8

Yellow Brass: HP Part 1 Float Valve



MasterFlow Code	Size (mm)	Bag Qty	Box Qty
MFVHP104	1/2"	1	50
MFVHP1046	1/2" - 6" Arm	1	50
MFVA6	6" Arm	1	100
MFVHP104BF	1/2"	1	50
MFVHP106	3/4"	1	25

Yellow Brass: HP Part 2 Float Valve



MasterFlow Code	Size (mm)	Bag Qty	Box Qty
MFVHP204	1/2"	1	50

Yellow Brass: Valve Ball Float cw Brass Insert

MasterFlow Code	Size (mm)	Bag Qty	Box Qty
MFVBF4	4.1/2" Float	1	50

**Yellow Brass: LP Part 1 Float Valve**

MasterFlow Code	Size (mm)	Bag Qty	Box Qty
MFVLP104	1/2"	1	50

**Yellow Brass CP: Straight Service Valve CP**

MasterFlow Code	Size (mm)	Bag Qty	Box Qty
M40150400P	15 x 1/2"	1	150



Yellow Brass CP: Angle Service Valve CP



MasterFlow Code	Size (mm)	Bag Qty	Box Qty
M41150400P	15 x 1/2"	1	150

Yellow Brass: Isolating Valve Light Pattern



MasterFlow Code	Size (mm)	Bag Qty	Box Qty
M28150000	15	10	200
M28220000	22	5	100

Yellow Brass CP: Isolating Valve Light Pattern CP



MasterFlow Code	Size (mm)	Bag Qty	Box Qty
M28150000P	15	10	200
M28150000DZRP	15	5	100
M28220000P	22	10	200
M28220000DZRP	22	5	100

Yellow Brass: Lever Isolating Valve Lp Chr

MasterFlow Code	Size (mm)	Bag Qty	Box Qty
M28150000LVP	15	5	30



Yellow Brass: Lever Isolating Valve Lp DZR Chr

MasterFlow Code	Size (mm)	Bag Qty	Box Qty
M28150000LVDZRP	15	1	70



Yellow Brass: Isolating Valve Angled LP CHR

MasterFlow Code	Size (mm)	Bag Qty	Box Qty
M28150000AP	15	5	100



Yellow Brass: Isolating Valve Heavy Pattern

MasterFlow Code	Size (mm)	Bag Qty	Box Qty
M32150000	15	5	160

Yellow Brass CP: Isolating Valve Heavy Pattern CP

MasterFlow Code	Size (mm)	Bag Qty	Box Qty
M32150000P	15	5	160

Yellow Brass: Mi Isolating Valve CP

MasterFlow Code	Size (mm)	Bag Qty	Box Qty
M32150300P	15 x 3/8"	5	32
M32150400P	15 x 1/2"	5	20

Yellow Brass: Angled Mi Isolating Valve CP

MasterFlow Code	Size (mm)	Bag Qty	Box Qty
M28150300AP	15 x 3/8"	5	32
M28150400AP	15 x 1 2"	5	20


Yellow Brass CP: Full Bore Isolating Valve CP

MasterFlow Code	Size (mm)	Bag Qty	Box Qty
M30150000P*	15	5	100
M30150000DZRP	15	5	100
M30220000P*	22	5	50
M30220000DZRP	22	5	50


Yellow Brass: Full Bore Isolating Valve

MasterFlow Code	Size (mm)	Bag Qty	Box Qty
M30150000	15	5	100
M30220000	22	5	50



Yellow Brass: Single Check Valve



MasterFlow Code	Size (mm)	Bag Qty	Box Qty
MSCV1500	15	1	100
MSCV2200	22	1	50
MSCV2800	28	1	25

Yellow Brass: Double Check Valve



MasterFlow Code	Size (mm)	Bag Qty	Box Qty
M37150000	15	2	120
M37220000	22	2	80
M37220000DZR	22	5	50
M37280000	28	2	50

Yellow Brass: F x F Double Check Valve DZR



MasterFlow Code	Size (mm)	Bag Qty	Box Qty
M37040000DZR	1/2"	1	120
M37060000DZR	3/4"	1	80
M37080000DZR	1"	1	50
M37100000DZR	1 1/4"	1	30
M37120000DZR	1 1/2"	1	20
M37160000DZR	2"	1	10

Yellow Brass CP: Straight Washing Machine Tap Light Pattern Single Check Valve

MasterFlow Code	Size (mm)	Bag Qty	Box Qty
MWM1506	15 x 3/4"	1	150
MWM1506DCV	15 x 3/4"	1	150


Yellow Brass CP: Angle Washing Machine Tap Light Pattern

MasterFlow Code	Size (mm)	Bag Qty	Box Qty
MWMA1506	15 x 3/4"	1	150


Yellow Brass CP: Tee Washing Machine Tap Light Pattern

MasterFlow Code	Size (mm)	Bag Qty	Box Qty
MWMT1506	15 x 3/4"	1	100



Yellow Brass: Washing Machine Brass 'Y' Connector



MasterFlow Code	Size (mm)	Bag Qty	Box Qty
MWMYCON		1	

Grey: PVC Outlet Hose



MasterFlow Code	Size (mm)	Bag Qty	Box Qty
MWMHO15	1.5M	1	5
MWMHO25	2.5M	1	5

Blue: Washing Machine Hose



MasterFlow Code	Size (mm)	Bag Qty	Box Qty
MWMH15B	1.5M	1	25
MWMH25B	2.5M	1	10

Red: Washing Machine Hose

MasterFlow Code	Size (mm)	Bag Qty	Box Qty
MWMH15R	1.5M	1	25
MWMH25R	2.5M	1	10

**Yellow Brass:** 'Y' Strainer

MasterFlow Code	Size (mm)	Bag Qty	Box Qty
MBYS15	15	1	100
MBYS22	22	1	50



Flexi Hoses - WRAS Approved

- WRAS approved.
- Compliant with relevant British standards.
- Manufactured using high quality material.
- Supported by full manufacturer's warranty.



FH - WRAS Approved: F x F Flexible Tap Connector



MasterFlow Code	Size (mm)	Bag Qty	Box Qty
MFLEXTC040430	1/2" x 1/2" x 30cm	2	100
MFLEXTC040450	1/2" x 1/2" x 50cm	2	100

FH - WRAS Approved: C x F Flexible Tap Connector



MasterFlow Code	Size (mm)	Bag Qty	Box Qty
MFLEXTC 150330	15 x 3/8 x 30cm	2	160
MFLEXTC 150415	15 x 1/2" x 15cm	2	100
MFLEXTC 150430	15 x 1/2 x 30cm	2	160
MFLEXTC 150450	15 x 1/2 x 50cm	2	120
MFLEXTC 150630	15 x 3/4 x 30cm	2	150
MFLEXTC 150650	15 x 3/4 x 50cm	2	120
MFLEXTC220630	22 x 3/4 x 30cm	2	100
MFLEXTC220650	22 x 3/4 x 50cm	2	80
MFLEXTC220690	22 x 3/4 x 90cm	2	80

FH - WRAS Approved: C x C Flexible Tap Connector

MasterFlow Code	Size (mm)	Bag Qty	Box Qty
MFLEXTC151530	15 x 15 x 30cm	2	150
MFLEXTC151550	15 x 15 x 50cm	2	100
MFLEXTC151590	15 x 15 x 90cm	2	50
MFLEXTC222230	22 x 22 x 30cm	2	50
MFLEXTC222250	22 x 22 x 50cm	2	50



FH - WRAS Approved: C x F Flexible Tap Connector - Maximum Bore

MasterFlow Code	Size (mm)	Bag Qty	Box Qty
MFLEXTC150430M	15 x 1/2 x 30cm	2	100



FH - WRAS Approved: C x C Flexible Tap Connector & ISO Valve

MasterFlow Code	Size (mm)	Bag Qty	Box Qty
MFLEXTC151530V	15 x 15 x 30cm	2	100



FH - WRAS Approved: F x C Bent Flexi Tap Connector



MasterFlow Code	Size (mm)	Bag Qty	Box Qty
MFLEXTC1504B	15mm x 1/2" x 300 mm	1	120
MFLEXTC1506B	15mm x 3/4" x 300 mm	1	120
MFLEXTC150490B	15mm x 1/2" x 900mm	1	50
MFLEXTC150690B	15mm x 3/4" x 900 mm	1	50
MFLEXTC2206B	22mm x 3/4" x 300 mm	1	50
MFLEXTC220690B	22mm x 3/4" x 900 mm	1	30

FH - WRAS Approved: F x C Flexi Tap Connector Pushfit



MasterFlow Code	Size (mm)	Bag Qty	Box Qty
MFLEX1504MPF	15mm x 1/2" x 300 mm	1	120
MFLEX15045MPF	15mm x 1/2" x 500 mm	1	120
MFLEX150490MPF	15mm x 1/2" x 900 mm	1	50

FH - WRAS Approved: C x C Flexi Tap Connector Pushfit



MasterFlow Code	Size (mm)	Bag Qty	Box Qty
MFLEX1515MPF	15mm x 15mm x 300 mm	1	120
MFLEX151550MPF	15mm x 15mm x 500mm	1	120
MFLEX151590MPF	15mm x 15mm x 900mm	1	50

FH - WRAS Approved: F x C Bent Flexi Tap Connector Pushfit.

MasterFlow Code	Size (mm)	Bag Qty	Box Qty
MFLEX1504MPFB	15mm x 1/2" x 300 mm	1	120
MFLEX150450MPFB	15mm x 1/2" x 500 mm	1	120
MFLEX150490MPFB	15mm x 1/2" x 900 mm	1	120


FH - WRAS Approved: C x F Flexible Tap Connector & ISO Valve

MasterFlow Code	Size (mm)	Bag Qty	Box Qty
MFLEXTC150415V	15 x 1/2" x 15cm	2	100
MFLEXTC1504V	15 x 1/2" x 30cm	2	150
MFLEXTC1510450V	15 x 1/2" x 50cm	2	100
MFLEXTC1506V	15 x 3/4" x 30cm	2	150
MFLEXTC1510650V	15 x 3/4" x 50cm	2	100
MFLEXTC2206V	22 x 3/4" x 30cm	2	100


FH - WRAS Approved: Mono Basin Mixer Flexible Tap Connectors

MasterFlow Code	Size (mm)	Bag Qty	Box Qty
MFLEXMTC1004	10 x 1/2" x 30cm	1 pair	100
MFLEXMTC100450	10 x 1/2" x 50cm	1 pair	50
MFLEXMTC1015	10 x 15 x 30cm	1 pair	50
MFLEXMTC120450	12 x 1/2" x 50cm	1 pair	50
MFLEXMTC1204	12 x 1/2" x 30cm	1 pair	150
MFLEXMTC1215	12 x 15 x 30cm	1 pair	75



Flexi Hoses - Non WRAS Approved

- Marked for full traceability.
- Compliant with relevant standards.
- Manufactured using high quality material.
- Supported by full manufacturer's warranty.



FH - Non WRAS Approved: Flexible Tap Connector Cu x Fi



MasterFlow Code	Size (mm)	Bag Qty	Box Qty
MFLEXTC 150330E	15 x 3/8" x 30cm	2	160
MFLEXTC 150430E	15 x 1/2" x 30cm	2	160
MFLEXTC 150630E	15 x 3/4" x 30cm	2	150
MFLEXTC 150650E	15 x 3/4" x 50cm	2	120
MFLEXTC 220630E	22 x 3/4" x 30cm	2	100

FH - Non WRAS Approved: Flexible Tap Connector Cu x Cu



MasterFlow Code	Size (mm)	Bag Qty	Box Qty
MFLEXTC 151530E	15 x 15 x 30cm	2	160

FH - Non WRAS Approved: Maximum Bore Flexible Tap Connector Cu x Fi

MasterFlow Code	Size (mm)	Bag Qty	Box Qty
MFLEXTC150430ME	15 x 1/2" x 30cm	2	100


FH - Non WRAS Approved: Pushfit Flexible Tap Connector Cu x Cu

MasterFlow Code	Size (mm)	Bag Qty	Box Qty
MFLEXTC1515PE	15 x 15 x 30cm	2	50


FH - Non WRAS Approved: Flexible Isovalve Tap Connector Cu x Fi

MasterFlow Code	Size (mm)	Bag Qty	Box Qty
MFLEXTC1504VE	15 x 1/2"	2	150
MFLEXTC1506VE	15 x 3/4"	2	150
MFLEXTC2206VE	22 x 3/4"	2	100


FH - Non WRAS Approved: Mono Flexi Tap Connector

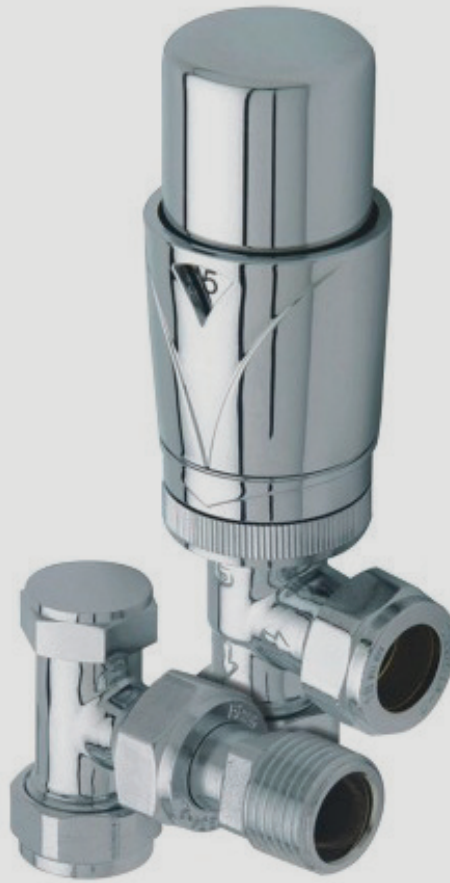
MasterFlow Code	Size (mm)	Bag Qty	Box Qty
MFLEXMTC1004E	10 x 1/2"	1 pair	100
MFLEXMTC1204E	12 x 1/2"	1 pair	100



Heating Products

- WRAS Approved (where applicable) *
- Marked for full traceability.
- Compliant with relevant standards.
- Manufactured using high quality material.
- Supported by full manufacturer's warranty.

*See website for further details



Ground Face: Angled Wheelhead and Lockshield Valve (3/4" nut)



MasterFlow Code	Size (mm)	Bag Qty	Box Qty
MWLV10A	10	1	50
MWLV15A	15	1	50

Ground Face: Straight Wheelhead and Lockshield Valve (3/4" nut)



MasterFlow Code	Size (mm)	Bag Qty	Box Qty
MWLV15S	15	1	50

Ground Face: Angled Lockshield with Drain Off (3/4" nut)

MasterFlow Code	Size (mm)	Bag Qty	Box Qty
MWLV10AD	10	1	50
MWLV15AD	15	1	50



Nut & Tail: BS2767 Angled Wheelhead and Lockshield Valve (1/2" nut)

MasterFlow Code	Size (mm)	Bag Qty	Box Qty
MWLNT0810	8 x 10	1	50
MWLNT15	15	1	50



Nut & Tail: BS2767 Angled Lockshield with Drain Off (1/2" nut)

MasterFlow Code	Size (mm)	Bag Qty	Box Qty
MWLNT0810D	8 x 10	1	50
MWLNT15D	15	1	50



Nut & Tail: Pushfit Elbow

MasterFlow Code	Size (mm)	Bag Qty	Box Qty
MRVPFE10	15 x 10	1	80
MRVPFE15	15 x 15	1	80

Nut & Tail: Pushfit Straight

MasterFlow Code	Size (mm)	Bag Qty	Box Qty
MRVPFS10	10	1	80

Designer: Angled Radiator Valve (1/2" nut) (Pair)

MasterFlow Code	Size (mm)	Bag Qty	Box Qty
MRVAECO15P	15	1	48

Designer: Straight Radiator Valve (1/2" nut) (Pair)

MasterFlow Code	Size (mm)	Bag Qty	Box Qty
MRVASECO15P	15	1	48

Designer: Angled Radiator Valve (1/2" nut) Single

MasterFlow Code	Size (mm)	Bag Qty	Box Qty
MRVAECO 15PS	15mm	1	48



Designer: Straight Radiator Valve (1/2" nut) Single

MasterFlow Code	Size (mm)	Bag Qty	Box Qty
MRVASECO 15PS	15mm	1	48



Designer: All Chrome Luxury Angled Manual Radiator Valve (3/4" nut) (Pair)

MasterFlow Code	Size (mm)	Bag Qty	Box Qty
MAMRVA 15LUXP	15	1	30



Designer: All Chrome Luxury Straight Manual Radiator Valve (3/4" nut) (Pair)

MasterFlow Code	Size (mm)	Bag Qty	Box Qty
MAMRVS 15LUXP	15	1	30



Designer: All Chrome Luxury Corner Manual Radiator Valve (3/4" nut) (Pair)

MasterFlow Code	Size (mm)	Bag Qty	Box Qty
MAMRVC15LUXP	15	1	30

Thermostatic Radiator Valve - TRV1 Angle (1/2 nut")



MasterFlow Code	Size (mm)	Bag Qty	Box Qty
MTRV1A	15	1	50

Thermostatic Radiator Valve - TRV1 Straight (1/2 nut")



MasterFlow Code	Size (mm)	Bag Qty	Box Qty
MTRV1S	15	1	24

Thermostatic Radiator Valve & Lockshield Pack (1/2 nut)



MasterFlow Code	Size (mm)	Bag Qty	Box Qty
MTRVPK1	15	1	45

Luxury all Chrome Thermo Angled Rad Valve (1/2 nut")

MasterFlow Code	Size (mm)	Bag Qty	Box Qty
MTRV2ALP	15	1	50



Luxury Chrome Thermo Straight Rad Valve (1/2 nut")

MasterFlow Code	Size (mm)	Bag Qty	Box Qty
MTRV2SLP	15	1	50



Luxury all Chrome Angled TRV Valve and Lockshield (1/2 nut")

MasterFlow Code	Size (mm)	Bag Qty	Box Qty
MTRVPK2LP	15	1	20



Radiator Extension Chrome

MasterFlow Code	Size (mm)	Bag Qty	Box Qty
MRADEX10P	10	5	400
MRADEX20P	20	5	300
MRADEX40P	40	5	200
MRADEX60P	60	5	160



Radiator Tail Extension Chrome



MasterFlow Code	Size (mm)	Bag Qty	Box Qty
MRADTAIL75P	75	1	200

Gate Type Pump Valve (WRAS Approved)



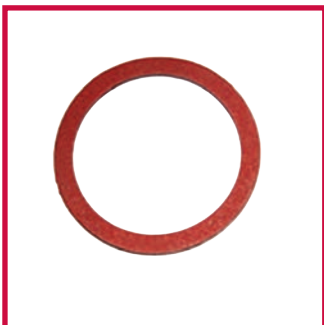
MasterFlow Code	Size (mm)	Bag Qty	Box Qty
MPVG22	22	1	50
MPVG28	28	1	50

Ball Type Pump Valve (WRAS Approved)



MasterFlow Code	Size (mm)	Bag Qty	Box Qty
MPVB22	22	1	60
MPVB28	28	1	60

Pump Valve Gasket



MasterFlow Code	Size (mm)	Bag Qty	Box Qty
MPVG12	1 1/2"	1	300

Straight Filling Loop (WRAS Approved)

MasterFlow Code	Size (mm)	Bag Qty	Box Qty
MFILLOOP	15	1	40



Tee Filling Loop (WRAS Approved)

MasterFlow Code	Size (mm)	Bag Qty	Box Qty
MFILLOPT	15	1	50



R24 Filling Loop (WRAS Approved)

MasterFlow Code	Size (mm)	Bag Qty	Box Qty
MFILLOOP24	15	1	60



Pressure Relief Valve Gauge

MasterFlow Code	Size	Bag Qty	Box Qty
MPRVPG026	1/4"	1	100



Pressure Reducing Valves c/w Gauge (WRAS Approved)



MasterFlow Code	Size (mm)	Bag Qty	Box Qty
MPRV15G	15	1	20
MPRV22G	22	1	20

Bottle Auto Air Vent



MasterFlow Code	Size (mm)	Bag Qty	Box Qty
MBAV03	3/8"	1	50
MBAV04	1/2"	1	50
MBAV15	15	1	50

Directional Radiator Vent Chrome



MasterFlow Code	Size (mm)	Bag Qty	Box Qty
MDRVO4P	1/2"	10	1000

Radiator Plug Chrome



MasterFlow Code	Size (mm)	Bag Qty	Box Qty
MRPO4P	1/2"	10	1000

Brass Rad Vent Key

MasterFlow Code	Size (mm)	Bag Qty	Box Qty
MRKTB		5	1000



Clock Type Rad Key

MasterFlow Code	Size (mm)	Bag Qty	Box Qty
MRKCT		5	1000



Galvanised Steel Band

MasterFlow Code	Size (mm)	Bag Qty	Box Qty
MGBAND1210	12mm x 10m		



Thermostatic Blending Valve TMV2 / TMV3 Eco

MasterFlow Code	Size (mm)	Bag Qty	Box Qty
MTBVU23E	15	1	24



Nail On Clip



MasterFlow Code	Size (mm)	Bag Qty	Box Qty
MNC08	8	100	120
MNC10	10	100	80
MNC15	15	100	40
MNC22	22	50	60
MNC28	28	50	40

Single Hinged Clip



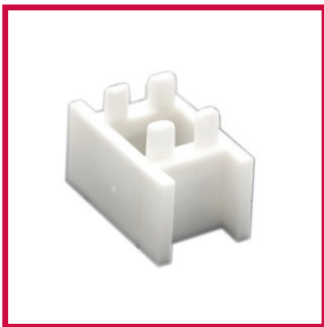
MasterFlow Code	Size (mm)	Bag Qty	Box Qty
MHCS15	15	100	40
MHCS22	22	100	20
MHCS28	28	50	40

Double Hinged Clip



MasterFlow Code	Size (mm)	Bag Qty	Box Qty
MHCD15	15	50	20
MHCD22	22	50	30

Hinged Clip Spacer



MasterFlow Code	Size (mm)	Bag Qty	Box Qty
MHCSPACER	N/A	100	6000

P.T.F.E Tape

MasterFlow Code	Size (mm)	Bag Qty	Box Qty
MPTFE	N/A	10	1000



Double Munsen Ring Brass

MasterFlow Code	Size (mm)	Bag Qty	Box Qty
MFMD15	15	50	800
MFMD22	22	50	500
MFMD28	28	25	400
MFMD35	35	25	250
MFMD42	42	25	200
MFMD54	54	10	200



Single Munsen Ring Brass

MasterFlow Code	Size (mm)	Bag Qty	Box Qty
MFMS15	15	50	800
MFMS22	22	50	500
MFMS28	28	25	400
MFMS35	35	25	250
MFMS42	42	25	200
MFMS54	54	10	200
MFMS67	67	10	110
MFMS76	76	10	80



Single Munsen Ring Chrome

MasterFlow Code	Size (mm)	Bag Qty	Box Qty
MFMS15P	15	50	800
MFMS22P	22	50	500
MFMS28P	28	25	400
MFMS35P	35	25	250
MFMS42P	42	25	200
MFMS54P	54	10	200



Screw on Bracket Brass



MasterFlow Code	Size (mm)	Bag Qty	Box Qty
MFSBP15	15	50	500
MFSBP22	22	50	500
MFSBP28	28	25	400
MFSBP35	35	20	200
MFSBP42	42	10	150
MFSBP54	54	10	100

Screw on Bracket Chrome



MasterFlow Code	Size (mm)	Bag Qty	Box Qty
MFSBP15P	15	50	500
MFSBP22P	22	50	500
MFSBP28P	28	25	400
MFSBP35P	35	20	200
MFSBP42P	42	10	150
MFSBP54P	54	10	150

Hospital Bracket Brass



MasterFlow Code	Size (mm)	Bag Qty	Box Qty
MSHP15	15	50	400
MSHP22	22	50	400
MSHP28	28	50	250
MSHP35	35	25	200
MSHP42	42	10	100
MSHP54	54	10	100

Screw on Bracket Chrome



MasterFlow Code	Size (mm)	Bag Qty	Box Qty
MFSB15P	15	50	600
MFSB22P	22	50	400
MFSB28P	28	50	250

Screw on Bracket Brass

MasterFlow Code	Size (mm)	Bag Qty	Box Qty
MFSB15	15	25	8
MFSB22	22	25	8
MFSB28	28	25	8
MFSB35	35	25	8
MFSB42	42	25	4
MFSB54	54	25	2



Copper Saddle Clip

MasterFlow Code	Size (mm)	Bag Qty	Box Qty
MFSC15	15	100	2000
MFSC22	22	100	2000
MFSC28	28	100	1500



Backplate Female Brass M10

MasterFlow Code	Size (mm)	Bag Qty	Box Qty
MFBP10FP	M10	100	1000



Backplate Female Chrome M10

MasterFlow Code	Size (mm)	Bag Qty	Box Qty
MFBP10FP	M10	100	1000



Backplate Male Brass M10



MasterFlow Code	Size (mm)	Bag Qty	Box Qty
MFBP10M	M10	100	1000

Backplate Male Chrome M10



MasterFlow Code	Size (mm)	Bag Qty	Box Qty
MFBP10MP	M10	100	1000

Galv Backplate M10 Female



MasterFlow Code	Size (mm)	Bag Qty	Box Qty
MGP10F	M10	25	0

Rubber Lined Clip

MasterFlow Code	Size (mm)	Bag Qty	Box Qty
MRLC1419	3/8" - 14/19mm	25	0
MRLC2025	1/2" - 20/25mm	25	0
MRLC2631	3/4" - 26/31mm	25	0
MRLC3236	1" - 32/36mm	25	0
MRLC3843	1 1/4" - 38/43mm	25	0
MRLC4751	1 1/2" - 47/51mm	10	0
MRLC5358	1 3/4" - 53/58mm	10	0
MRLC6064	2" - 60/64mm	10	0
MRLC6872	2 1/4" - 68/72mm	10	0
MRLC7580	2 1/2" - 75/80mm	10	0
MRLC8186	2 3/4" - 81/86mm	10	0
MRLC8792	3" - 87/92mm	10	0
MRLC99105	3 1/2" - 99/105mm	10	0



Gas Fittings

- Marked for full traceability.
- Supported by full manufacturer's warranty.
- Compliant with relevant standards.
- Manufactured using high quality material.



Gas Fittings: Straight C + C Mini Ball Valve Chrome



MasterFlow Code	Size (mm)	Bag Qty	Box Qty
M61080000G	8	10	300
M61100000G	10	10	250
M61150000G	15	10	140

Gas Fittings: Straight Reducing C + C Mini Ball Valve Chrome



MasterFlow Code	Size (mm)	Bag Qty	Box Qty
M61100800G	10 to 8	1	250
M61150800G	15 to 8	1	200
M61151000G	15 to 10	10	200

Gas Fittings: Bent C + C Mini Ball Valve Chrome



MasterFlow Code	Size (mm)	Bag Qty	Box Qty
M62080000G	8	1	200
M62100000G	10	1	150

Gas Fittings: Straight C + C Mini Ball Valves c/w Fi x Brkt Chrome

MasterFlow Code	Size (mm)	Bag Qty	Box Qty
M64080000G	8	1	200
M64100000G	10	1	180


Gas Fittings: Straight C + MI Taper Mini Ball Valve Chrome

MasterFlow Code	Size (mm)	Bag Qty	Box Qty
M65100200G	10 x 1/4"	1	40
M65100300G	10 x 3/8"	1	40


Gas Fittings: Lever Ball Valves (Yellow Handle)

MasterFlow Code	Size (mm)	Bag Qty	Box Qty
M69150000G	15	1	50
M69220000G	22	1	40
M69280000G	28	1	25
M69030000G	3/8"	1	140
M69040000G	1/2"	1	80
M69060000G	3/4"	1	40
M69080000G	1"	1	36
M69100000G	1 1/4"	1	17
M69120000G	1 1/2"	1	12
M69160000G	2"	1	8


Gas Fittings: Brass C + C ISO Gas Valves

MasterFlow Code	Size (mm)	Bag Qty	Box Qty
MISOGAS08	8	1	250
MISOGAS10	10	1	200
MISOGAS15	15	1	180
MISOGAS22	22	1	100



Gas Fittings: Micro Straight Cooker Socket

MasterFlow Code	Size (mm)	Bag Qty	Box Qty
MCMS	1/2"	1	150

Gas Fittings: Bent Bayonet Connector

MasterFlow Code	Size (mm)	Bag Qty	Box Qty
MCBB	1/2"	1	100

Gas Fittings: Straight Bayonet Connector

MasterFlow Code	Size (mm)	Bag Qty	Box Qty
MCBS	1/2"	1	100

Gas Fittings: Stainless Steel Cooker Hob Connector

MasterFlow Code	Size (mm)	Bag Qty	Box Qty
MHOBCON	15mm x 1/2" x 600mm	1	10


Gas Fittings: Catering Hose Quick Release

MasterFlow Code	Size (mm)	Bag Qty	Box Qty
MCH041000	1000mm x 1/2"	1	10
MCH041500	1500mm x 1/2"	1	8
MCH061000	1000mm x 3/4"	1	8
MCH061500	1500mm x 3/4"	1	8


Gas Fittings: Micro Angled Cooker Hose 3ft

MasterFlow Code	Size (mm)	Bag Qty	Box Qty
MCHM3	3/8"	1	1
MCHM35	3/8" 3ft 6"	1	1
MCHM4	3/8" 4ft	1	1



Gas Fittings: Bayonet Cooker Hose

MasterFlow Code	Size (mm)	Bag Qty	Box Qty
MCHB3	3ft	1	1
MCHB4	4ft	1	1

Gas Fittings: Bayonet LPG Cooker Hose 3ft

MasterFlow Code	Size (mm)	Bag Qty	Box Qty
MCHB3L	3ft	1	1

Gas Fittings: Meter Union BS746

MasterFlow Code	Size (mm)	Bag Qty	Box Qty
MCMUBS746	28 x 1"	10	120

Gas Fittings: Meter Union Grooved

MasterFlow Code	Size (mm)	Bag Qty	Box Qty
MCMUG	22 x 1"	10	140



Gas Fittings: Meter Union Washer

MasterFlow Code	Size (mm)	Bag Qty	Box Qty
MCMUW	N/A	1	200



Gas Fittings: Cooker Stability Chain & Hook

MasterFlow Code	Size (mm)	Bag Qty	Box Qty
MCSCH		1	200



Gas Fittings: Pressure Test Nipple

MasterFlow Code	Size (mm)	Bag Qty	Box Qty
MCPTN15	15	1	100

Gas Fittings: Pressure Test Nipple

MasterFlow Code	Size (mm)	Bag Qty	Box Qty
MCPTN	1/8"	10	150

Gas Fittings: Backplate Adaptor Angled

MasterFlow Code	Size (mm)	Bag Qty	Box Qty
MBA1504A	15 x 1/2"	1	120

Gas Fittings: Backplate Adaptor Capillary

MasterFlow Code	Size (mm)	Bag Qty	Box Qty
MBA1504C	15 x 1/2"	1	140


Gas Fittings: Backplate Adaptor Straight

MasterFlow Code	Size (mm)	Bag Qty	Box Qty
MBA1504S	15 x 1/2"	1	150


Gas Fittings: Gas PTFE Tape

MasterFlow Code	Size (mm)	Bag Qty	Box Qty
MPTFEG	N/A	10	250



Taps

- Marked for full traceability.
- Supported by full manufacturer's warranty.
- Compliant with relevant standards.
- Manufactured using high quality material.



Taps Base Non Concussive: 01 Basin Taps (WRAS Approved) (Pair)



MasterFlow Code	Size	Bag Qty	Box Qty
BNC01CP	1/2"	1	N/A

Taps Base Non Concussive: 02 Basin Taps (Pair)



MasterFlow Code	Size	Bag Qty	Box Qty
BNC02CP	1/2"	1	N/A

Taps Asti Non Concussive: Mono Basin Mixer



MasterFlow Code	Size	Bag Qty	Box Qty
ANC100C	1/2"	1	12

Taps Base: Basin Taps Chrome

MasterFlow Code	Size	Bag Qty	Box Qty
BA200C	1/2"	1	N/A


Taps Base: Bath Taps Chrome

MasterFlow Code	Size	Bag Qty	Box Qty
BA300C	3/4"	1	N/A


Taps Base: Mono Basin Mixer c/w PU Waste Chrome

MasterFlow Code	Size (mm)	Bag Qty	Box Qty
BA100C	1/2"	1	N/A


Taps Base: BSM Chrome

MasterFlow Code	Size	Bag Qty	Box Qty
BA400C	3/4"	1	N/A



Taps Base: Bath Filler Chrome

MasterFlow Code	Size	Bag Qty	Box Qty
BA500C	3/4"	1	N/A

Taps Base: Highneck Pillar Taps Chrome

MasterFlow Code	Size	Bag Qty	Box Qty
BA700C	1/2"	1	N/A

Taps Base: Monosink Mixer Chrome

MasterFlow Code	Size (mm)	Bag Qty	Box Qty
BA702C	1/2"	1	N/A

Taps Base: Decksink Mixer Chrome

MasterFlow Code	Size	Bag Qty	Box Qty
BA701C	1/2"	1	N/A

Taps Base Lever: Basin Taps Chrome

MasterFlow Code	Size	Bag Qty	Box Qty
BAL200C	1/2"	1	N/A



Taps Base Lever: Bath Taps Chrome

MasterFlow Code	Size	Bag Qty	Box Qty
BAL300C	3/4"	1	N/A



Taps Base Lever: Mono Basin Mixer c/w PU Waste Chrome

MasterFlow Code	Size	Bag Qty	Box Qty
BAL100C	1/2"	1	N/A



Taps Base Lever: BSM Chrome

MasterFlow Code	Size	Bag Qty	Box Qty
BAL400C	3/4"	1	N/A



Taps Base Lever: Bath Filler Chrome

MasterFlow Code	Size	Bag Qty	Box Qty
BAL500C	3/4"	1	N/A

Taps Base Lever: Highneck Pillar Taps Chrome

MasterFlow Code	Size	Bag Qty	Box Qty
BAL700C	1/2"	1	N/A

Taps Base Lever: Monosink Mixer Chrome

MasterFlow Code	Size	Bag Qty	Box Qty
BAL702C	1/2"	1	N/A

Taps Base Lever: Decksink Mixer Chrome

MasterFlow Code	Size	Bag Qty	Box Qty
BAL701C	1/2"	1	N/A

Taps Base Crosshead: Basin Taps Chrome

MasterFlow Code	Size	Bag Qty	Box Qty
BAX200C	1/2"	1	N/A



Taps Base Crosshead: Bath Taps Chrome

MasterFlow Code	Size	Bag Qty	Box Qty
BAX300C	3/4"	1	N/A



Taps Base Crosshead: Base Crosshead Bib Tap Chrome (Single)

MasterFlow Code	Size	Bag Qty	Box Qty
BAX201C	1/2"	1	N/A



Taps Base Crosshead: Highneck Pillar Taps Chrome

MasterFlow Code	Size	Bag Qty	Box Qty
BAX700C	1/2"	1	N/A



Taps Base Contemporary: Basin Taps Chrome

MasterFlow Code	Size	Bag Qty	Box Qty
BAC200C	1/2"	1	N/A

Taps Base Contemporary: Bath Taps Chrome

MasterFlow Code	Size	Bag Qty	Box Qty
BAC300C	3/4"	1	N/A

Taps Base Contemporary: Mono Basin Mixer c/w Clicker Waste Chrome

MasterFlow Code	Size	Bag Qty	Box Qty
BAC100KC	1/2"	1	N/A

Taps Base Contemporary: Mini Mono Basin Mixer c/w Clicker Waste Chrome

MasterFlow Code	Size	Bag Qty	Box Qty
BAC104KC	1/2"	1	N/A

Taps Base Contemporary: Bath Shower Mixer Chrome

MasterFlow Code	Size	Bag Qty	Box Qty
BAC400C	3/4"	1	N/A


Taps Base Contemporary: Base Contemporary Bath Filler Chrome

MasterFlow Code	Size	Bag Qty	Box Qty
BAC500C	3/4"	1	N/A


Taps Asti Lever: Basin Taps Chrome (Pair)

MasterFlow Code	Size	Bag Qty	Box Qty
ASL200C	1/2"	1	0


Taps Asti Lever: Bath Taps Chrome (3/4" nut)

MasterFlow Code	Size	Bag Qty	Box Qty
ASL300C	1/2"	1	0



Taps Asti Lever: *Mono Basin Mixer c/w Clicker Waste Chrome*

MasterFlow Code	Size	Bag Qty	Box Qty
ASL100KC	1/2"	1	N/A

Taps Asti Lever: *Mini Mono Basin Mixer c/w Clicker Waste Chrome*

MasterFlow Code	Size	Bag Qty	Box Qty
ASL104KC	1/2"	1	N/A

Taps Asti Lever: *Bath Shower Mixer Chrome*

MasterFlow Code	Size	Bag Qty	Box Qty
ASL400C	3/4"	1	N/A

Taps Asti Lever: *Bath Filler Chrome*

MasterFlow Code	Size	Bag Qty	Box Qty
ASL500C	3/4"	1	N/A

Taps Cubica: Mono Basin Mixer c/w Clicker Waste Chrome

MasterFlow Code	Size	Bag Qty	Box Qty
CU100KC	1/2"	1	N/A


Taps Cubica: Bath Shower Mixer Chrome

MasterFlow Code	Size (mm)	Bag Qty	Box Qty
CU400C	3/4"	1	N/A


Taps Cubica: Bath Filler Chrome

MasterFlow Code	Size (mm)	Bag Qty	Box Qty
CU500C	3/4"	1	N/A


Taps Cubica: Mini Mono Basin Mixer c/w Clicker Waste Chrome

MasterFlow Code	Size	Bag Qty	Box Qty
CU104KC	1/2"	1	N/A



Showers

- Marked for full traceability.
- Supported by full manufacturer's warranty.
- Compliant with relevant standards.
- Manufactured using high quality chrome material.

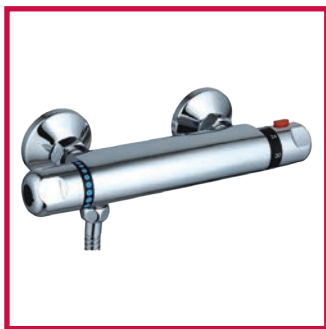


Showers: Base Uni Manual Shower



MasterFlow Code	Size (mm)	Bag Qty	Box Qty
BACUMSVC	N/A	1	1

Showers: Base Bar Shower Valve Chrome



MasterFlow Code	Size (mm)	Bag Qty	Box Qty
BABSVC	1/2"	1	N/A

Showers: Asti Lever Bar Shower Valve Chrome



MasterFlow Code	Size (mm)	Bag Qty	Box Qty
ASLBSVC	1/2"	1	N/A

Showers: Rieta Square Bar Shower Valve Chrome

MasterFlow Code	Size (mm)	Bag Qty	Box Qty
RSQBSVC	1/2"	1	N/A


Showers: Asti Bar Shower c/w Diverter, Rigid Riser, Fixed Head and Handset

MasterFlow Code	Size (mm)	Bag Qty	Box Qty
ASBSDRRHC	1/2"	1	N/A


Showers: Rieta Square Bar Shower c/w Diverter, Rigid Riser, Fixed Head and Handset

MasterFlow Code	Size (mm)	Bag Qty	Box Qty
RSQBSDRRHC	1/2"	1	N/A


Showers: Base Single Function Shower Kit Chrome

MasterFlow Code	Size (mm)	Bag Qty	Box Qty
BASKSC	1/2"	1	N/A



Showers: Base Multi Function Shower Kit Chrome

MasterFlow Code	Size (mm)	Bag Qty	Box Qty
BASKMC	1/2"	1	N/A

Showers: Base Single Function Handset Chrome

MasterFlow Code	Size (mm)	Bag Qty	Box Qty
BAHSC	1/2"	1	N/A

Showers: Base Multi Function Handset Chrome

MasterFlow Code	Size (mm)	Bag Qty	Box Qty
BAHMC	1/2"	1	N/A

Showers: Base Single Function Fixed Shower Head Chrome

MasterFlow Code	Size (mm)	Bag Qty	Box Qty
BAHFSC	1/2"	1	N/A

Showers: Base Multi Function Fixed Shower Head Chrome

MasterFlow Code	Size (mm)	Bag Qty	Box Qty
BAHFMC	1/2"	1	N/A


Showers: Base Shower Arm & Single Function Shower Head

MasterFlow Code	Size (mm)	Bag Qty	Box Qty
BASAFHC	1/2"	1	N/A


Showers: Base Vertical Shower Arm Chrome

MasterFlow Code	Size (mm)	Bag Qty	Box Qty
BASAVC	1/2"	1	N/A


Showers: Base 300mm Shower Arm Chrome

MasterFlow Code	Size (mm)	Bag Qty	Box Qty
BASA300C	1/2"	1	N/A



Showers: Base Wall Mount Brackets Chrome (Pair)

MasterFlow Code	Size (mm)	Bag Qty	Box Qty
BAWMBC	1/2"	1	N/A

Showers: Rieta Square Wall Mount Brackets Chrome (Pair)

MasterFlow Code	Size (mm)	Bag Qty	Box Qty
RSQWMBC	1/2"	1 pair	0

Showers: Asti Shower Wall Outlet Chrome

MasterFlow Code	Size (mm)	Bag Qty	Box Qty
ASSWOC	1/2"	1	N/A

Taps Base Non Concussive: Base Non Concussive Shower Valve Chrome

MasterFlow Code	Size	Bag Qty	Box Qty
BNCSVC	15mm	1	0

Showers: Rieta Square Shower Wall Outlet Chrome

MasterFlow Code	Size (mm)	Bag Qty	Box Qty
RSQSWOC	1/2"	1	N/A


Showers: Shower Hose Cone to Hex. 11 mm Bore

MasterFlow Code	Size (mm)	Bag Qty	Box Qty
BASHCH15C	1.5m	1	0
BASHCH175C	1.75m	1	0



Traps & Wastes

- Marked for full traceability.
- Supported by full manufacturer's warranty.
- Compliant with relevant standards.
- Manufactured using high quality chrome material.



Traps: Round Bottle Trap Chrome



MasterFlow Code	Size (mm)	Bag Qty	Box Qty
BTRC	1 1/4"	1	N/A

Wastes: Bath Mushroom Clicker Waste & OverFlow Chrome



MasterFlow Code	Size (mm)	Bag Qty	Box Qty
WBTMCC	1 1/2"	1	N/A

Wastes: Pop-Up Bath Waste Chrome

MasterFlow Code	Size (mm)	Bag Qty	Box Qty
WBTPUC	1 1/2"	1	N/A


Wastes: Bath Waste with Parking Plug Overflow Chrome

MasterFlow Code	Size (mm)	Bag Qty	Box Qty
WBTPPC	1 1/2"	1	N/A


Wastes: Bath Waste C/W Metal Plug

MasterFlow Code	Size (mm)	Bag Qty	Box Qty
WBTMPCC	1 1/2"	1	50


Wastes: Bath Waste C/W Poly Plug & Ss Flange

MasterFlow Code	Size (mm)	Bag Qty	Box Qty
WBTPPCSS	1 1/2"	1	50



Wastes: Stubby Bath Waste Chrome

MasterFlow Code	Size (mm)	Bag Qty	Box Qty
WBTSTUBC	1 1/2"	1	50

Wastes: Eco Combination Sink Waste

MasterFlow Code	Size (mm)	Bag Qty	Box Qty
WSNKCPPSS	1 1/2"	1	60

Wastes: Slotted Brass Basin Waste, Plug, Chain & Stay - Chrome

MasterFlow Code	Size (mm)	Bag Qty	Box Qty
WBSPCC	1 1/4"	1	N/A

Wastes: Slotted Brass Basin Waste C/W Poly Plug, Chain & Stay Chrome

MasterFlow Code	Size (mm)	Bag Qty	Box Qty
WBSPCC	1 1/4"	1	50

Wastes: Slotted Eco Basin Waste C/W Poly Plug, Chain & Stay Chrome

MasterFlow Code	Size (mm)	Bag Qty	Box Qty
WBSPPPB	1 1/4"	1	50


Wastes: Slotted Brass Basin Clicker Waste - Chrome

MasterFlow Code	Size (mm)	Bag Qty	Box Qty
WBSCSC	1 1/4"	1	N/A


Wastes: Unslotted Brass Basin Clicker Waste - Chrome

MasterFlow Code	Size (mm)	Bag Qty	Box Qty
WBSCUC	1 1/4"	1	N/A


Wastes: Slotted Mushroom Brass Basin Clicker Waste - Chrome

MasterFlow Code	Size (mm)	Bag Qty	Box Qty
WBSCMSC	1 1/4"	1	N/A



Wastes: Unslotted Mushroom Brass Basin Clicker Waste - Chrome

MasterFlow Code	Size	Bag Qty	Box Qty
WBSCMUC	1 1/4"	1	N/A

Wastes: Slotted Swivel Waste Chrome

MasterFlow Code	Size	Bag Qty	Box Qty
WBSSWSC	1 1/4"	1	N/A

Wastes: Unslotted Swivel Waste Chrome

MasterFlow Code	Size	Bag Qty	Box Qty
WBSSWUC	1 1/4"	1	N/A

Wastes: Slotted Grid Basin Waste Chrome

MasterFlow Code	Size (mm)	Bag Qty	Box Qty
WBSGRIDSC	1 1/4"	1	N/A



Wastes: Unslotted Grid Basin Waste Chrome

MasterFlow Code	Size (mm)	Bag Qty	Box Qty
WBSGRIDUC	1 1/4"	1	N/A



Wastes: Shower tray waste

MasterFlow Code	Size (mm)	Bag Qty	Box Qty
WSH90B	90mm (Black)	1	N/A
WSH90C	90mm (Chrome)	1	N/A

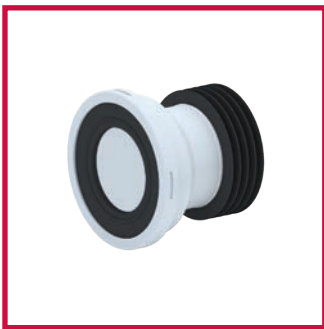


Pan Connectors

- Range is compatible with all standard toilet pan spigots
- Suitable for 4" (110mm) outlet pipe
- Flexible fittings in 3 adjustable sizes
- Wire reinforced option available (product code WPCFLEXR2656)



Pan Connectors: Straight Pan Connector



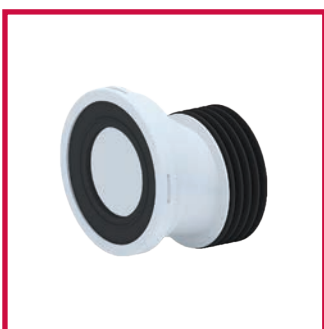
MasterFlow Code	Size (mm)	Bag Qty	Box Qty
WPCST124	124.5	1	N/A

Pan Connectors: Bent Pan Connector



MasterFlow Code	Size (mm)	Bag Qty	Box Qty
WPCB303	303	1	N/A

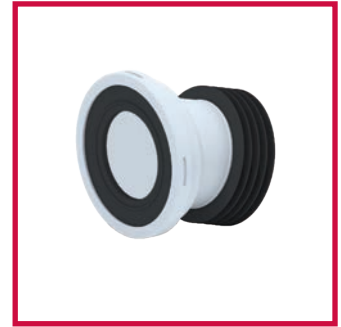
Pan Connectors: Straight Pan Connector Offset



MasterFlow Code	Size (mm)	Bag Qty	Box Qty
WPCOFF20	20	1	N/A
WPCOFF40	40	1	N/A

Pan Connectors: Straight Pan Connector 110mm 14° or Reverse 104°

MasterFlow Code	Size (mm)	Bag Qty	Box Qty
WPCSTREV	110	1	N/A


Pan Connectors: Flexi Straight Pan Connector

MasterFlow Code	Size (mm)	Bag Qty	Box Qty
WPCFLEX2855	280 - 550	1	N/A
WPCFLEX3075	300 - 750	1	N/A
WPCFLEX39111	395 - 1115	1	N/A
WPCFLEXR2656	260 - 560 (c/w Metal Spiral)	1	N/A


Pan Connectors: Flexi Bent Pan Connector

MasterFlow Code	Size (mm)	Bag Qty	Box Qty
WPCBFLEX2855	280 - 550	1	N/A
WPCBFLEX3075	301 - 750	1	N/A
WPCBFLEX39101	396 - 1015	1	N/A


Pan Connectors: Straight Extended Pan Connector

MasterFlow Code	Size (mm)	Bag Qty	Box Qty
WPCST255	255	1	N/A



Fittings Specifications

Fittings Specifications



End Feed Fittings 118



Solder Ring Fittings 119



Compression Fittings 120



Copper Pushfit Fittings 121



WRAS Approved Flexi Tap Connectors 122

End Feed Fittings



MasterFlow End Feed capillary fittings are available in sizes 8-54mm and are suitable for connecting copper tubes in accordance with EN 1057.

MasterFlow End Feed fittings are designed for solder and brazing applications, with the exception of Union fittings with copper tails, which can only be soft soldered.

Hydraulic working temperatures and pressures based on EN 1254-1 are shown below:

Applications & Technical Information

Drinking water	Y
Sanitary water	Y
Heating and chilled water systems	Y
Compressed air	Y
Gas	Y
Available Sizes	8 -54mm
Operating Parameters solder 6-54mm	<p>Water</p> <p>Using Tin Silver 95/5%</p> <p>25 bar, 0°C to 30°C 25 bar @ 65°C</p> <p>19 bar @ 95°C 16 bar @ 110°C</p> <p>Using Tin Lead 50/50% or 60/40%</p> <p>16 bar, 0°C to 30°C 10 bar @ 65°C</p> <p>7 bar @ 95°C 6 bar @ 110°C</p> <p>Water</p>
Operating Parameters brazed 15mm	<p>35.1 bar, -20°C to 110°C</p> <p>29.8 bar @ 150°C</p> <p>15.8 bar @ 200°C</p>
Material	Copper and Yellow Brass

Solder Ring Fittings



A comprehensive range of solder ring fittings.

Features & benefits

- WRAS approved
- Contains lead-free solder complying with EN 29453 and ISO 9453
- Manufactured in accordance with EN 1254-1
- Available in sizes 8mm to 54mm
- Suitable for connecting copper tubes in accordance with EN 1057
- Accurate ring of solder to remove the need for guesswork and to ensure a quick and secure fitting
- Hydraulic working temperatures and pressures based on EN 1254-1
- Covered by manufacturer's warranty

Size (mm)	Working Pressure (bar)			
	0°C - 30°C	65°C	95°C	110°C
8 - 54	16	10	7	6

Compression Fittings



MasterFlow Compression fittings are especially advantageous in retrofit plumbing schemes, where space is confined and/or the use of heat must be avoided. They are available in 8 - 54mm and are suitable for connecting a wide range of tubes in accordance with EN 1057.

MasterFlow Compression fittings are available in duplex brass and/or dezincification resistant (DZR) brass or dezincification immune red brass. Fittings are also available in chrome plated in accordance with EN 248.

MasterFlow Compression fittings are also compatible with low carbon steel, stainless steel and many types of plastic pipe including crossed linked polyethylene (PE-X) and polybutylene (PB) with size compatible outside diameters.

Applications & Technical Information

Drinking water	Y
Sanitary water	Y
Heating and chilled water systems	Y
Compressed air	Y
LPG and Natural Gas	Y
Available Sizes Water	8-54 mm
Available Sizes Gas	8-28mm (recommendation)
Available Sizes Compressed air	8-28mm
Warranty	Backed by full manufacturers product warranty
Operating Parameters Water	8-15, 25 bar @ 0 to 95°C 28, 16 bar @ 0 to 95°C 35-54, 13 bar @ 0 to 95°C
Operating Parameters Gas	8-28, 1 bar @ 30°C
Operating Parameters Compressed Air	8-28, 7 bar @ 30°C
Material	Brass, DZR

Copper Pushfit Fittings



- Suitable for hot and cold drinking water, heating and chilled water systems
- Connects copper tubes in sizes 10, 15, 22 & 28mm
- Designed for tight corners and exposed pipe work
- Fast and easy to use flame free installation
- Maintains electrical continuity on metallic pipe systems
- Conforms to normal operating parameters for metallic tubes: maximum working pressure of 16 bar at 30°C and 7bar 95°C
- Fitting can be recycled at the end of life

Applications & Technical Information

Drinking water	Y
Sanitary water	Y
Heating and chilled water systems	Y
Available Sizes	10, 15, 22, 28
Warranty	25 Years
Operating Parameters	16 bar @ 0-30°C 10 bar @ 65°C 7 bar @ 95°C
Material	Body: Copper or DZR O-Ring: EPDM Grab Ring: Stainless Steel
Water / Glycol	50/50 to -20°C
Disconnect and Reuse	x 20



Flexi Tap Connectors

- WRAS Approved
- Hot & cold water systems only, not for use on heating installations

Code	Description	Size	Length (mm)	Bore Dia. (mm)	Maximum Operating Pressure (Bars)	Maximum Operating Temperature (°C)
MFLEXMTC1004	Mi X Fi Mono Flexi Tap Connector	10 x 1/2"	300	8.5-8.7	16	80°C
MFLEXMTC1015	Mi X C Mono Flexi Tap Connector	10 x 15mm	300	8.5-8.7	16	80°C
MFLEXMTC1204	Mi X Fi Mono Flexi Tap Connector	12 x 1/2"	300	8.5-8.7	16	80°C
MFLEXMTC1215	Mi X C Mono Flexi Tap Connector	12 x 15mm	300	8.5-8.7	16	80°C
MFLEXTC040430	F x F - Flexi Tap Connector	1/2" x 1/2"	300	9.5-9.7	16	80°C
MFLEXTC040450	F x F - Flexi Tap Connector	1/2" x 1/2"	500	9.5-9.7	16	80°C
MFLEXTC100450	Mi X Fi Mono Flexi Tap Connector	10 x 1/2"	500	8.5-8.7	16	80°C
MFLEXTC120450	Mi X Fi Mono Flexi Tap Connector	12 x 1/2"	500	8.5-8.7	16	80°C
MFLEXTC150330	C X Fi Flexi Tap Connector	15 x 3/8"	300	9.5-9.7	16	80°C
MFLEXTC150415	C X Fi Flexi Tap Connector	15 x 1/2"	150	9.5-9.7	16	80°C
MFLEXTC150415V	C X Fi Flexi Tap Connector C/W Iso Valve	15 x 1/2"	150	9.5-9.7	16	80°C
MFLEXTC150430	C X Fi Flexi Tap Connector	15 x 1/2"	300	9.5-9.7	16	80°C
MFLEXTC150430M	C X Fi Flexi Tap Connector Max Bore	15 x 1/2"	300	13-13.2	16	80°C
MFLEXTC150450	C X Fi Flexi Tap Connector	15 x 1/2"	500	9.5-9.7	16	80°C
MFLEXTC1504V	C X Fi Flexi Tap Connector C/W Iso Valve	15 x 1/2"	300	9.5-9.7	16	80°C
MFLEXTC150630	C X Fi Flexi Tap Connector	15 x 3/4"	300	9.5-9.7	16	80°C
MFLEXTC150650	C X Fi Flexi Tap Connector	15 x 3/4"	500	9.5-9.7	16	80°C
MFLEXTC1506V	C X Fi Flexi Tap Connector C/W Iso Valve	15 x 3/4"	300	9.5-9.7	16	80°C
MFLEXTC1510450V	C X Fi Flexi Tap Connector C/W Iso Valve	15 x 1/2"	500	9.5-9.7	16	80°C
MFLEXTC1510650V	C X Fi Flexi Tap Connector C/W Iso Valve	15 x 3/4"	500	9.5-9.7	16	80°C
MFLEXTC151530	C X C Flexi Tap Connector	15 x 15mm	300	9.5-9.7	16	80°C
MFLEXTC151530V	C X C Flexi Tap Connector C/W Iso Valve	15 x 15mm	300	9.5-9.7	16	80°C
MFLEXTC151550	C X C Flexi Tap Connector	15 x 15mm	500	9.5-9.7	16	80°C
MFLEXTC151590	C X C Flexi Tap Connector	15 x 15mm	900	9.5-9.7	16	80°C
MFLEXTC220630	C X Fi Flexi Tap Connector	23 x 3/4"	300	13-13.2	16	80°C
MFLEXTC220650	C X Fi Flexi Tap Connector	23 x 3/4"	500	13-13.2	16	80°C
MFLEXTC2206V	Cf Tap Con & Iso Valve	22 x 3/4"	300	13-13.2	16	80°C
MFLEXTC222230	C X C Flexi Tap Connector	22 x 22mm	300	13-13.2	16	80°C
MFLEXTC222250	C X C Flexi Tap Connector	23 x 22mm	500	13-13.2	16	80°C

MASTERFLOW PRODUCTS LIMITED TERMS AND CONDITIONS OF SUPPLY

1. General

All quotations must be given and all contracts must be concluded by MasterFlow Products Limited (Company) in writing, or in electronic form through the Company's Electronic Data Interchange (EDI). These terms and conditions shall apply to all quotations and contracts for the sale or supply of goods (Goods) made between the Company and the recipient of the Goods (Purchaser) unless expressly varied or excluded in writing signed by one of the Company Directors. These terms and conditions and any quotation given constitute the entire agreement between the parties (Contract). If any of these conditions or any part thereof is rendered void or unenforceable by any legislation to which it is subject, it shall be so void and unenforceable to that extent and not further.

2. Acceptance

- 2.1 All orders are subject to the Company's written acknowledgement and are accepted on the understanding that these terms and conditions apply to the exclusion of all other terms and conditions which the Purchaser may purport to apply under any purchase order, confirmation of order or similar document.
- 2.2 Orders accepted cannot be cancelled without the Company's written consent and on terms which will indemnify the Company for all direct, indirect and consequential loss, damage, costs and expenses as a result of such cancellation.
- 2.3 Orders made through the EDI shall only become binding upon acknowledgement or receipt of order given by the Company and these terms and conditions shall apply.

3. Delivery

- 3.1 Time of delivery shall not be of essence and any dates expressed in the Contract or quotation are given subject to this condition. The Company shall not be liable for any direct, indirect or consequential loss, damage costs or expenses incurred or suffered by the Purchaser as a result of any delay in despatch or delivery howsoever caused.
- 3.2 Delivery of the Goods shall take place:
 - (a) where the Company transports the Goods, at the time the Goods are unloaded from the Company's vehicle or any third party carrier at the station, port or location specified by the Purchaser, or
 - (b) where the Purchaser transports the Goods at the Company's premises or other pre-arranged location.

4. Prices

- 4.1 Unless otherwise stated in the Contract, all prices in quotations and contracts are exclusive of VAT and apply to Goods packed in standard packs.
- 4.2 Orders to the value of £150 sterling or more will be supplied carriage paid to any premises of the Purchaser in the United Kingdom. Carriage of the Goods by the Company to any premises other than the Purchaser's premises are subject to the Customer's surcharge to cover carriage costs, such surcharge is a minimum charge of £35 sterling. No allowance will be made for carriage costs where Goods are collected by the Purchaser, or its agents from the Company's premises.
- 4.3 The Company reserves the right to impose a minimum order charge of £25 sterling on any order placed with a value less than £150 sterling to cover minimum administration and carriage costs to the Purchaser's premises in the UK.
- 4.4 Goods may be supplied by passenger train, special carrier service or air freight at the Customer's request subject to additional charges agreed with the Company.
- 4.5 Where FOB orders are valued at less than £750 sterling the Company reserves the right to impose additional charges for packing and delivery.
- 4.6 The Company reserves the right to refuse orders CFR or CIF to the value of less than £1,500 sterling. All CIF and CFR prices we based on the current freight rates and the Company reserves the right to amend the charges in the event of changes in freight rates at the time of shipment.
- 4.7 All prices are subject to alteration without prior notice and all orders are accepted on the understanding that they will be invoiced at prices ruling at the day of despatch. The Purchaser will pay such prices as so invoiced.
- 4.8 Any matter apart from the supply of Goods such as special packing tests or inspections, samples or other impositions shall be charged extra to the Purchaser.
- 4.9 All quotations made in currencies other than sterling are based on current exchange rates and the Company reserves the right to amend these in the event of changes in the rates of exchange.
- 4.10 All packing specifications are estimated and subject to possible alteration in the event of an order.
- 4.11 The terms FOB, CIF and CFR are as defined by Incoterms 2000 (as amended from time to time).

5. Payment

- 5.1 Unless otherwise agreed, payment of the price for the Goods is due in pounds sterling and shall be payable not later than 30 days after the last day of the month in which the Company delivers the Goods. Time for payment is of the essence of the Contract. If payment is not made by the due date the Company reserves the right to suspend deliveries on this or any other contract with the Purchaser.
- 5.2 Where the contract is may be fulfilled in separate instalments deliveries or parts, payment for each such instalment, delivery or part shall be made under sub-clause 5.1 above as if the same constituted a separate contract.
- 5.3 Should the Purchaser fail punctually to comply with the terms of payment, the Company shall be entitled to interest on any amount outstanding from the due date until the actual date of payment at the rate of 4% above the Barclays Bank Base Rate in force from time to time unless otherwise stated by the Company in writing at the time of ordering.

6. Risk and property in the Goods

- 6.1 Risk of damage to or loss of the Goods shall pass to the Purchaser at the time of delivery by the Company or collection by the Purchaser or, if the Purchaser fails to take delivery of the Goods, the time when the Company has tendered delivery of the Goods.
- 6.2 Notwithstanding delivery and passing of risk in Goods, or any other provision of these conditions, the property in any Goods shall not pass to the Purchaser until the Company has received payment in full of:
 - 6.2.1 the price of those Goods; and
 - 6.2.2 the price of all other Goods agreed to be sold by the Company to the Purchaser for which payment in full has not been received by the Company, in cash or cleared funds.
- 6.3 Until such time as the property in the Goods passes to the Purchaser, the Purchaser shall, at its own cost, hold the Goods as the Company's fiduciary agent and bailee, and shall keep the Goods separate from those of the Purchaser and third parties and properly stored, protected and insured and identified as the Company's property. The Purchaser shall be entitled to re-sell or use the Goods in the ordinary course of business.
- 6.4 Until such time as the property in the Goods passes to the Purchaser, (and provided the Goods are still in existence and have not been re-sold), the Company shall be entitled at any time to require the Purchaser to deliver up such Goods to the Company and, if the Purchaser fails to do so forthwith, to enter upon any premises of the Purchaser or any third party where the Goods are stored and re-possess either:
 - 6.4.1 the Goods unpaid for, or
 - 6.4.2 other Goods which are the property of the Company up to the value of those unpaid for
- 6.5 The Purchaser shall not make any modifications to the Goods or their packaging or alter, remove or tamper with any marks, numbers or other means of identification on or in relation to the Goods.
- 6.6 The Purchaser shall account to the Company for the proceeds of sale or otherwise the Goods whether tangible or intangible, including insurance proceeds and shall keep all such proceeds of sale or otherwise on trust for the Company and hold separate from any monies or property of the Purchaser and third parties and in the case of tangible proceeds properly stored, protected and insured provided that the Purchaser will have no authority to enter into any contract of sale or other contract on behalf of the Company and any such contract shall accordingly be concluded in the name of the Purchaser.
- 6.7 The Purchaser shall not be entitled to pledge or in any way charge by way of security for any indebtedness any of the Goods which remain the property of the Company, but if the Purchaser does so all monies owing by the Purchaser to the Company shall (without prejudice to any other right or remedy of the Company) forthwith become due and payable.

7. Insolvency of the Purchaser

- 7.1 Where any of the following occurs, without prejudice to any other right or remedy available to the Company, the Company shall be entitled to cancel the Contract or suspend any further deliveries under the Contract without any liability to the Purchaser. If any of the Goods have been delivered to the Purchaser but not paid for, the price shall become immediately due and payable notwithstanding any previous agreement or arrangement to the contrary:
 - (a) the Purchaser makes any agreement or composition with its creditors or if a bankruptcy petition is presented or if the Purchaser enters into liquidation whether compulsorily or voluntarily; or
 - (b) an encumbrancer takes possession, or a receiver is appointed over the whole or any part of the Purchaser's assets or undertaking; or
 - (c) an administrator has been appointed to manage its affairs, business and property or if the Purchaser takes or suffers any similar action in consequence of debt; or
 - (d) the Purchaser ceases or threatens to cease to carry on business, suspends payments of its debts or is unable to pay its debts; or
 - (e) the Company reasonably apprehends that any of the events mentioned above is about to occur in relation to the Purchaser and notifies the Purchaser accordingly; or
 - (f) the Purchaser is subject to any event analogous to (a) or (e) in any other jurisdiction in which the Purchaser operates, where any of the events set out in (a) to (f) shall be defined as an Act of Insolvency

8. Undertaking and exclusion of liability

- 8.1 The Company warrants that on delivery and for a period of 365 days from the date of delivery, the Goods shall be of satisfactory ability within the meaning of the Sale or Goods Act 1979. The Purchaser shall give notice to the Company in writing of any breach of this warranty and shall give the Company reasonable opportunity to examine such Goods. The Company shall not be liable for any breach of this warranty if:
 - (a) the Purchaser makes any further use of such Goods after giving such notice; or
 - (b) the defect arises because the Purchaser failed to follow the Company's instruction as to the storage, installation, use or maintenance of the Goods; or
 - (c) the Purchaser alters or repairs such Goods without the Company's written consent
- 8.2 In the event of any Goods (or parts thereof) in place acknowledged by the Company to be defective, the Company shall repair the Goods, or at the Company's option supply free of charge new Goods (or parts thereof) and the Company shall have no further liability in respect of such defective Goods (or parts thereof).

- 8.3 The warranty given in condition 8.1 shall apply to any repaired or replaced Goods provided hereunder for the duration of the unexpired portion or the 365-day period applicable to the Goods for which the repair or replacement has been performed.
 - 8.4 Subject as expressly provided in these conditions and except where the Goods are sold to a person dealing as a consumer (within the meaning of the Unfair Contract Terms Act 1977) all warranties, conditions or other terms which apart from this condition would be implied by statute or common law are excluded to the fullest extent permitted by law. Where the Goods are sold to a person dealing as a consumer (within the meaning of the Unfair Terms Act 1977) the statutory rights of the Purchaser are not affected by these conditions.
 - 8.5 Neither the Company nor its officers, employees and agents shall (except in respect of death or personal injury caused by the negligence of the Company its officers, employees or agents and any liability which cannot be excluded under part 1 Consumer Protection Act 1987) be liable to the Purchaser by reason of any representation or implied warranty condition or other terms or any duty at common law, or under the express terms of the Contract, for any injury and/or loss, and/or damage of any kind whatsoever and howsoever arising or arisen whether direct, indirect, consequential or special and howsoever caused (whether occasioned by the negligence of the Company or its officers, employees or agents or otherwise and including without limitation any loss arising out of the liability of the Purchaser to any third party by virtue of part 1 Consumer Protection Act 1987) resulting from or arising out of or in connection with the Goods (including without limitation any defect therein and/or any act or omission of the Company in connection therewith, except as expressly provided in these conditions).
 - 8.6 In no event will the Company be liable under any terms of or otherwise in connection with the contract for lost profits or any indirect or consequential damages.
 - 8.7 The Purchaser shall indemnify the Company in full against any liability whatsoever (but excluding any liability based on the negligence of the Company its officers, employees or agents) which it may incur resulting from any claim made against the Company by a third party in respect of any matter for which liability to the Purchaser is excluded by the foregoing provisions of this condition 8.
 - 8.8 Accordingly it shall be for the Purchaser to insure against any liability arising as a result of these conditions (including without limitation the operation of conditions (*) to "8" - above).
9. **Checking Goods**
Unless the Purchaser gives written notice to the Company within 14 days from the date of arrival of the Goods at the Purchaser's premises or the destination agreed by the parties as the case may be that the Goods are not in conformity with the Contract, the Purchaser shall be deemed to have accepted the Goods and shall be bound to make payment thereof on the due date.
 10. **Special Goods**
Where the Company supplies Goods to the special requirement of the Purchaser the specification or description of which is outside the Company's usual range as set out in its catalogues the Company shall be entitled to supply the Purchaser 10% more or less of the quantity of such Goods and to be paid for the quantity actually delivered. Any drawings supplied by the Purchaser shall become the property of the Company. Where part cost dies and tools are charged they are kept for the Purchaser's own use, but they remain the property of the Company and the Purchaser has no property in them. The Company reserves the right to exclude obsolete, and to destroy, dies and tools from which no Goods have been ordered for a period of three years.
 11. **Inspection**
If tests are required to the Purchaser's own specification, such tests are to be carried out at the Company's premises and are to be final there, although if desired arrangements can be made for a representative of the Purchaser to observe such tests and inspection.
 12. **Returns**
Goods once despatched may not be returned without the Company's consent in writing. Where such consent is given, credit will only be allowed at the price at which the Goods were originally charged less a minimum of 20% to cover re-stocking, clerical and other expenses. Goods returned must be in good condition, adequately packed and identified and sent carriage paid. If transport is arranged by the Company either on its own vehicles or carriers the cost will be deducted from the credit.
 13. **Notification of damage, partial loss, etc**
 - 13.1 If the Goods or part thereof be damaged in transit or having been placed in transit have not been delivered to the Purchaser or as the Purchaser directed in writing:
 - (a) damage or partial loss from a consignment must be notified to the Company and the carrier, other than on a delivery document, immediately after delivery and confirmed in writing within 3 days;
 - (b) non-delivery of a consignment must be notified to the Company and the carrier in writing within 14 days of the date of despatch shown on the Company's invoice/advance note, whichever is the earlier, otherwise we reserve the right to charge for the costs ensuing from the delayed investigation;
 - (c) non-delivery of a consignment despatched to a destination outside the United Kingdom must be notified to the Company and the carrier in writing within 60 days of the date of despatch shown on the Company's invoice, otherwise we reserve the right to charge for costs ensuing from delayed investigation;
 - (d) the Company is not responsible for any damage to or loss of non-delivery of the Goods if by reason of the Purchaser's failure to give notice of damage or loss of non-delivery the Company is thereby prevented from recovering compensation for such damage or loss or non-delivery from the carrier or its agent. In the event the Company shall only be liable to pay such compensation as it receives from the carrier;
 - (e) where the Company has arranged marine insurance on behalf of the Purchaser, in the event of loss or damage, the terms and conditions stated on the insurance certificate must be strictly complied with.
 14. **Indemnity**
The Company shall not be liable for and the Purchaser shall indemnify and hold the Company harmless against all claims by any person for infringement or alleged infringement of patents trademarks copyright or registered designs or otherwise arising directly or indirectly in connection with Goods manufactured by or with work done by the Company on Goods in accordance with Purchaser's specifications or with the siting or installation of Goods.
 15. **Health and safety at work**
It is the responsibility of the Purchaser to take such steps as are necessary to ensure that appropriate information relevant to the Goods is made available to any person to whom the Purchaser supplies them.
 16. **Termination**
 - 16.1 Without prejudice to its other rights, the Company may by giving written notice to the Purchaser elect to determine the contract forthwith on the happening of any of the following events:
 - (a) if the Purchaser shall commit a breach of this or any other contract with the Company;
 - (b) if the Purchaser shall commit or be subject to an Act of Insolvency (as defined in condition 7);
 - (c) if any sum owing to the Company from the Purchaser on any account whatsoever shall be unpaid after the due date for payment (in which event the Company shall have a general lien for any sum on all or any property of the Purchaser in its possession);
 - (d) if the Purchaser shall refuse to take delivery of or collect any of the Goods in accordance with the terms of the Contract.
 17. **Descriptive matter**
Descriptive matter, illustrations, estimates of performance, dimensions and weights contained in documents issued by the Company are to be regarded as being for guidance only and are not binding on the Company in any way. The Company's policy is one of continuous improvement and the right to change designs at any time without notice is reserved. Claims of compliance with any relevant standards whether printed in catalogues or marked on Goods, are to be interpreted as type test compliance required by those relevant standards. Where any such details are important to the Purchaser the Purchaser should request the Company to confirm them expressly before placing an order.
 18. **Force Majeure**
In the event of the Company being delayed from performing the contract by any cause beyond its reasonable control including (but without limitation) shortage of materials, or power, delays in transit, strikes or lockouts or other industrial disputes, whether at the Company's premises or those of its suppliers, or accidents at the Company's premises, whether or not the same was or might have been foreseen when the contract was concluded, performance by the Company shall be suspended during the period of delay, provided always that if such delays shall exceed 6 months, after the Company or the Purchaser may give written notice terminating the contract as to further deliveries or work.
 19. **Waiver and set-off**
 - 19.1 No failure or delay on the part of the Company to exercise any of its rights under the contract shall operate as a waiver thereof nor shall any single or partial exercise of any such right preclude any other or further exercise thereof. Any waiver by the Company or any breach by the Purchaser of any of the Purchaser's obligations under the contract shall not affect the rights of the Company in the event of any further or additional breach or breaches.
 - 19.2 Any liability of the Company under the contract shall be subject to and conditional upon the due performance and observance by the Purchaser of all its obligations under these conditions and subject to these conditions the Purchaser shall not be entitled to withhold or delay payment or exercise any right of set-off whatsoever or howsoever arising which might otherwise be available to it.
 20. **English law**
All contracts for sale and these conditions shall in all respects be construed and operate in accordance with English Law and the Purchaser hereby submits to the non-exclusive jurisdiction of the English courts but without prejudice to the right of the Company to bring proceedings in any jurisdiction it thinks fit.
 21. **Miscellaneous**
If any of the foregoing provisions shall be invalid or unenforceable such invalidity of unenforceability shall not affect the remaining provisions.
 22. **Privacy notice**
We take your privacy very seriously and will only use your personal data to administer your account and provide the products and services you have requested from us.
Please refer to the privacy notice on our websites to understand what data we collect from you, why we collect it and how we will use it.
www.masterflow.uk.com
MASTERFLOW PRODUCTS LIMITED, Building 95, Second Avenue, Pensnett Estate, Kingswinford, DY6 7FT

MasterFlow

THE NAME YOU CAN TRUST



Visit www.masterflow.uk.com for the full range

MasterFlow

Astley Park Estate
The Gatehouse
Kennedy Road
Astley
Manchester
M29 7JY

WEB: www.masterflow.uk.com
EMAIL: masterflow@ibpgroup.com

TEL: 0845 600 3060
FAX: 0845 600 3061



The content of this publication is for general information only. It is the user's responsibility to determine suitability of any product, product data and specifications, for the purpose intended and reference should be made to our Technical Department if clarification is required – technical@ibpgroup.com. In the interests of technical development we reserve the right to change specification, design and materials without notice.

MasterFlow Products Ltd products are approved by numerous Standards Authorities and Certification Bodies. This is a representation of the full range from MasterFlow Products Ltd. Trademarks are registered in the United Kingdom and Northern Ireland.