



rob pond

INDEPENDENT DISTRIBUTOR TO THE PLUMBING & HEATING INDUSTRY

PRODUCT GUIDE

2023

www.robpond.com

ISSUE No. 15


CONTENTS

[JUMP TO PAGE](#) 


Product Highlights

Niche & Innovative Products 3 

Radiator & Towel Rail Accessories

SmartTouch Towel Rail Elements 5 

Electric Towel Rail Elements & Accessories 7 

Electric Towel Rail Control Plate 7 

Manual Radiator Valves 8 

Contemporary Thermostatic Radiator Valves 9 

Traditional Thermostatic Radiator Valves & Sleeve Kits 10 

Radiator Plugs, Vents & Valve Fittings 11 

Radiator Valve Extensions 12 


Valves & Brassware

Brass Blow-off Caps 13 

Drain-off Cocks & Self-cutting Valves 14 

Bibtaps & Wallplate Tubes 15 

Pressure Valves & Bypass Valves 16 

Cylinder Flanges & Threaded Brassware 17 

Expansion Vessel Bar Kits & Service Valve 18 

Perfect Pump Valves 19 

DryTrap Tundish 21 

Full-bore Isolating Valves for water & gas 22 

Washing Machine Valves and Posh Service Valves 23 

Isolating Valves 24 

Miscellaneous Brassware 25 

Flat-face Adaptors & Flexible Hoses

Monobloc Tail Adaptors 26 

Flexible Hoses 27 


Catering Hoses & HOBFLEX Gas Hoses 27 

Clips & Fixings


Munsen Rings & Schoolboard Clips 28 

Rubber Lined Clips & M10 Fittings 29 

Plastic Pipe Clips & Pipe Collars 30 

Sanitary Fixings 31 

Freeze Kits

IceCap Freeze Kits 32 

Further Information

Contact & Order Information 33 

Notes & Price List 34 

PRODUCT HIGHLIGHTS

SmartTouch Towel Rail Elements

PAGE 6

Quality electric towel rail elements with integral controls, providing on/off functionality, boost functions and available in four different colours. Innovative SmartTouch buttons with no raised profile.



Universal Radiator Valve Caps

PAGE 11

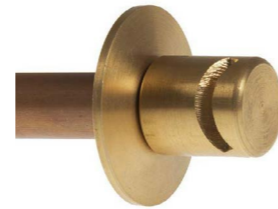
Replacement radiator valve caps, fitting 99% of manual radiator valves. Supplied with internal rubber grommets to grip the valve spline. Non-operational, aesthetic only.



Brass Blow-off Caps

PAGE 13

Brass fitting designed for PRV termination pipes, providing a safe method of routing discharge back towards a surface. Time- and cost-savings vs. alternative methods of terminating PRV pipework.



22mm Type A Drain-off Cocks

PAGE 14

22mm Type A drain-off cocks, with standard size spout and full rising spindle. Provides 70% faster drain-down times.



22mm Self-cutting Tap Adaptors

PAGE 14

Re-usable 22mm adaptor for self-cutting drain-off cocks and isolating valves, allowing live cutting into 22mm pipework. Compatible with our self-cutting drain-off cocks & isolating valves.



Perfect Pump Valves

PAGE 19

Full-bore design pump valves, providing 100% shut-off. 16 bar rated and nickel plated, supplied with quality rubber washers. The 22mm and 28mm are supplied with tee handles, the 35mm with lever handles.



Dual-appliance Valves

PAGE 23

Washing machine valves, designed with one 15mm inlet and two 3/4" outlets, allowing two appliances to be run off one valve.



Brass Washing Machine Y-pieces

PAGE 23

Brass, nickel-plated Y-pieces; far more durable option than plastic versions. Supplied with washer.



Monobloc Tail Adaptors

PAGE 26

Brass monobloc tail adaptors, designed to fit into an isolating valve, providing a flat face for flexible hoses with swivel nuts. This prevents chamfered edges of isolating valves cutting into hose washers, thus preventing leaks.



IceCap Freeze Kits

PAGE 32

Freeze kits with patented integral temperature gauges in the jackets, removing guesswork and gas wastage by displaying the thawing point.



SMARTTOUCH TOWEL RAIL ELEMENTS

Quality electric towel rail elements, with integral control units. The SmartTouch elements provide basic on/off functionality, and come with five different boost settings (1/2/3/4/5 hours).

The SmartTouch elements are available in four different colours (white, chrome, black and anthracite), to suit a variety of modern bathroom designs. The controls on each unit are touch-operated and completely flush to the unit, providing a sleek and quality finish.

Code	Output	Colour	Rod Length	Pack	Box
STE300A	300w	Anthracite	320mm	1	20
STE300B	300w	Black	320mm	1	20
STE300C	300w	Chrome	320mm	1	20
STE300W	300w	White	320mm	1	20
STE600A	600w	Anthracite	550mm	1	20
STE600B	600w	Black	550mm	1	20
STE600C	600w	Chrome	550mm	1	20
STE600W	600w	White	550mm	1	20

Accessories

TRECT
Dual-fuel tee piece
1/2" M+F



DFE12
Dual-fuel elbow
1/2" M+F+F
Fit opposite the tee piece for symmetrical installation



Features

- IPX4 rated ●
- 1.5m cable ●
- Temperature regulation 45-65°C ●
- On/off control ●
- 5 different boost settings (1/2/3/4/5 hour) ●
- Innovative SmartTouch buttons ●
- Available in 4 different colours ●



Electric towel rail elements



Features & information:

- IP55 rated
- 1.5m cable
- maintains liquid temp. between 40-54°C
- supplied with 1/2" tee piece and plug
- suitable for dual-fuel and electric-only installations
- supplied with fixed chrome cap

i

Element sizing

1. Halve the towel rail output
2. Round to the nearest element

E.g. 590w rail output = 300w element

To convert BTU's to Watts, divide by 3.41

Code	Output	Rod Length	Pack	Box
TRE150	150w	300mm	1	20
TRE200	200w	300mm	1	20
TRE250	250w	350mm	1	20
TRE300	300w	385mm	1	20
TRE400	400w	470mm	1	20
TRE500	500w	550mm	1	20
TRE600	600w	630mm	1	20
TRE800	800w	795mm	1	20

Our towel rail elements are suitable for electric-only and dual-fuel installations. Each element is supplied boxed, with a 1/2" chrome tee piece and 1/2" plug.

An internal 75°C thermostat ensures the liquid temperature in the rail is maintained between 40-54°C. The element must be submerged in liquid before being operated. Not doing so (running dry) will cause the element to burn itself out, as a safety feature, destroying the element and voiding the warranty.

Dual-fuel tee pieces and elbows



Features & information:

- 1/2"
- chrome plated

Code	Product	Pack	Box
TRECT	Tee piece	1	200
DFE12	Blanked elbow	1	200

The dual-fuel elbow is used to fit on the opposite side of the tee piece, providing a symmetrical installation.

Towel Rail Control Plate & Stainless steel cover



Features & information:

- IPX5 rated
- on/off control
- 20% incremental output control
- 2 hour boost function
- 85mm square
- active LED display
- controls elements up to 1,000w
- optional stainless steel cover plate available

Code	Product	Pack	Box
TCP200	Control plate	1	40
TCPSSC	S/steel cover plate	1	28

The TCP200 control plate is used to regulate the output of electric towel rail elements. With an IPX5 rating, an element can be wired directly into the unit (inside the bathroom) providing control over towel rail heating.

The unit provides output control in 20% increments, as well as a 2 hour boost function.

Corner pattern towel rail valves



Features & information:

- 15mm x 1/2"
- 3/4" union
- sold in pairs

Code	Pattern	Pack	Box
RVCORNER	Corner	1 Pair	20 Pair

Square corner pattern towel rail valves



Features & information:

- 15mm x 1/2"
- 3/4" union
- sold in pairs

Code	Pattern	Pack	Box
RVSQ	Corner	1 Pair	20 Pair

Dual-fuel corner pattern towel rail valves



Features & information:

- 15mm x 1/2"
- removable 1/2" plug
- sold in pairs

Code	Pattern	Pack	Box
RVCDF	Corner	1 Pair	20 Pair

These valves allow an electric towel rail element to be fitted directly through the bottom of the valve, removing the need for a Tee piece on dual-fuel towel rail installations, and providing a much neater finish.

Each pack is supplied with a polished chrome 1/2" removable plug, allowing the element to be fitted on either side of the towel rail.

Contemporary towel rail valves



Features & information:

- 15mm x 1/2"
- 3/4" union
- sold in pairs

Code	Pattern	Pack	Box
RVA	Angled	1 Pair	20 Pair
RVS	Straight	1 Pair	20 Pair

Contemporary square towel rail valves



Features & information:

- 15mm x 1/2"
- 3/4" union
- sold in pairs

Code	Pattern	Pack	Box
RVASQ	Angled	1 Pair	20 Pair
RVSSQ	Straight	1 Pair	20 Pair

Traditional bronze angled radiator valves



Features & information:

- 15mm x 1/2"
- 3/4" union
- sold in pairs

Code	Pattern	Pack	Box
BRONRAD	Angled	1 Pair	18 Pair

Removable insert, allowing either 1/2" FI or 15mm pipe connection.

Contemporary TRV & lockshield packs



Features & information:

- 15mm x 1/2"
- sold in packs



Code	Pattern	Colour	Pack	Box
TRVAC	Angled	Chrome body/head	1 Pair	20 Pair
TRVSC	Straight	Chrome body/head	1 Pair	20 Pair
TRVAW	Angled	CP body/white head	1 Pair	20 Pair
TRVSW	Straight	CP body/white head	1 Pair	20 Pair
TRVH-C		Chrome head only	1	
TRVH-W		White head only	1	

Corner contemporary TRV & lockshield packs



Features & information:

- 15mm x 1/2"
- sold in packs



Code	Pattern	Colour	Pack	Box
TRVCNR	Corner	Chrome body/head	1 Pair	20 Pair
TRVCNRW	Corner	CP body/white head	1 Pair	20 Pair
TRVH-C		Chrome head only	1	
TRVH-W		White head only	1	

Dual-fuel corner pattern TRV & lockshield



Features & information:

- 15mm x 1/2"
- all chrome body/head
- removable 1/2" plug
- sold in packs

Code	Pattern	Colour	Pack	Box
TRVDF	Corner	Chrome body/head	1 Pair	20 Pair

These valves allow an electric towel rail element to be fitted directly through the bottom of the valve, removing the need for a Tee piece on dual-fuel towel rail installations, and providing a much neater finish.

Each pack is supplied with a polished chrome 1/2" removable plug, allowing the element to be fitted on either side of the towel rail.

All chrome traditional TRV & lockshield



Features & information:

- 15mm x 1/2"
- 3/4" unions
- all chrome
- supplied with brown handles
- sold in packs

Code	Pattern	Colour	Pack	Box
BENATRV	Angled	Chrome	1 Pair	20 Pair
BENCTRV	Corner	Chrome	1 Pair	20 Pair

Brushed nickel traditional TRV & lockshield



Features & information:

- 15mm x 1/2"
- 3/4" unions
- brushed nickel
- supplied with brown handles
- sold in packs

Code	Pattern	Colour	Pack	Box
BENATRVBN	Angled	Brushed nickel	1 Pair	20 Pair
BENCTRVBN	Corner	Brushed nickel	1 Pair	20 Pair

Antique brass traditional TRV & lockshield



Features & information:

- 15mm x 1/2"
- 3/4" unions
- antique brass
- supplied with brown handles
- sold in packs

Code	Pattern	Colour	Pack	Box
BENATRVAB	Angled	Antique brass	1 Pair	20 Pair
BENCTRVAB	Corner	Antique brass	1 Pair	20 Pair

Black handle conversion for traditional TRV's



Features & information:

- black handle conversion

Code	Colour	Pack	Box
BENHANBL	Black	1	

Metal pipe sleeve kits



Features & information:

- 18mm brass sleeves
- supplied with brass collars
- supplied in pairs

Code	Colour	Pack	Box
SK130C	Chrome	1 Pair	
SK130BN	Brushed nickel	1 Pair	
SK130AB	Antique brass	1 Pair	

1/2" Radiator plug



Features & information:

- 1/2"
- nickel plated
- sold in singles

Code	Colour	Pack	Box
RP12	Nickel plated	50	1,000

1/2" Directional radiator vent



Features & information:

- 1/2"
- directional swivel vent
- sold in singles

Code	Colour	Pack	Box
RV12	White	50	800

Polished chrome radiator plug & vent



Features & information:

- 1/2"
- polished chrome
- removable plastic cap
- fit using allen key

Code	Product	Pack	Box
RP12PC	1/2" Plug CP	1	600
RV12PC	1/2" Vent CP	1	600
POSHPV	1/2" Plug/vent pack	Vent/Plug	120

Universal replacement radiator valve cap



Features & information:

- white
- universal cap with internal rubber grommets, designed to fit 99% of manual radiator valves
- non-operational, aesthetic only

Code	Colour	Pack	Box
RVCU	White	10	25 Packs

Replacement radiator valve tails



Features & information:

- replacement radiator tails, available in 2 options for either 1/2" or 3/4" unions
- sold in singles

Code	Size	Pack	Box
RVTR	1/2" x 1/2"	10	300
RVTR34	1/2" x 3/4"	10	400

Rigid, chrome round radiator valve extensions



Features & information:

- 1/2" M+F connections
- polished chrome
- internal 6-sided hex
- designed for 12mm allen key
- available in 10 sizes
- sold in singles

Code	Size	Pack	Box
RVE10C	10mm x 1/2"	10	700
RVE15C	15mm x 1/2"	10	550
RVE20C	20mm x 1/2"	10	500
RVE25C	25mm x 1/2"	10	400
RVE30C	30mm x 1/2"	10	350
RVE40C	40mm x 1/2"	10	280
RVE50C	50mm x 1/2"	10	240
RVE60C	60mm x 1/2"	10	200
RVE80C	80mm x 1/2"	10	100
RVE100C	100mm x 1/2"	10	120

Rigid 1/2" radiator valve extensions



Features & information:

- 15mm x 1/2"
- supplied with nut & olive
- can be cut to size
- available in 2 sizes
- sold in singles

Code	Size	Pack	Box
RTEP60	15mm x 1/2" x 60mm shank	10	200
RTEP100	15mm x 1/2" x 100mm shank	10	200

Telescopic 1/2" radiator valve extensions



Features & information:

- telescopic with sliding thread
- 15mm x 1/2"
- supplied with nut & olive
- available in 2 sizes
- sold in singles

Code	Size	Pack	Box
TTEPS	15mm x 50mm (30mm ext.)	10	250
TTEPL	15mm x 70mm (50mm ext.)	10	200

Telescopic radiator valve extensions for 3/4" unions



Features & information:

- telescopic with sliding thread
- 1/2" male thread to radiator
- designed to fit valves with 3/4" unions
- available in 2 sizes
- sold in singles

Code	Size	Pack	Box
RVETS	15mm x 50mm (35mm ext.)	10	280
RVETL	15mm x 70mm (55mm ext.)	10	240

1/2" Radiator valve extensions with drain-off cocks



Features & information:

- 15mm x 1/2"
- supplied with nut & olive
- available in 2 variants (rigid and telescopic)

Code	Type	Size	Pack	Box
EXDO	Rigid	60mm shank	1	280
TELEDO	Telescopic	25mm shank	1	240

Chrome 1/2" radiator valve extensions, designed with integral drain-off cocks. This allows a rad to be drained and lifted off the wall, rather than having to lift off whilst full of water.

The shank on the rigid extension can be cut to size, whilst the telescopic version comes with a sliding male thread, giving greater flexibility during installation.

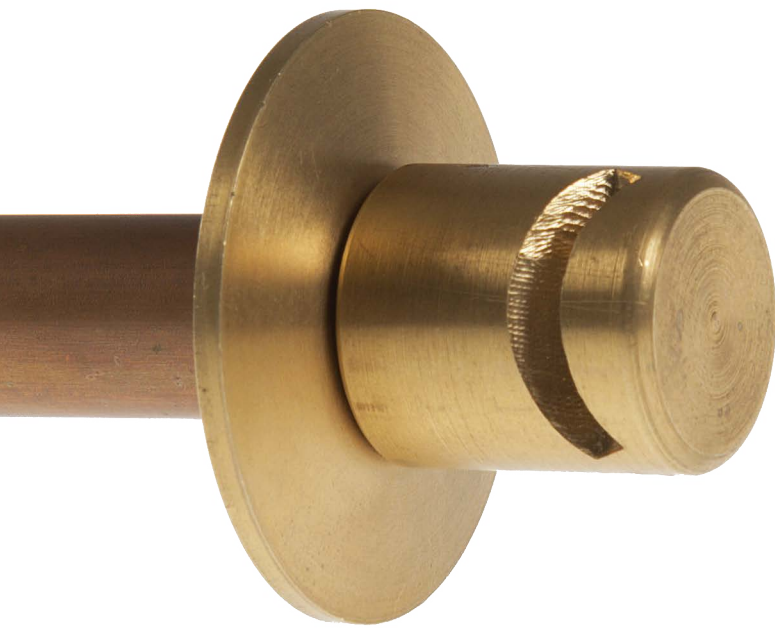
BRASS

BLOW-OFF CAP

An innovative fitting for PRV termination pipes, designed to safely discharge water back towards an external wall.

This fitting is supplied with an internal solder-ring, making installation on to 15mm pipe extremely simple, especially when working at height. The fitting is also designed to fit into a 22mm endfeed or solder-ring fitting.

Each cap is supplied with a heavy brass collar with an internal o-ring, providing a secure fit with a great aesthetic finish.



- Safely route PRV discharge back towards surface
- Time- and cost-savings vs. alternative methods
- Can be fitted to existing pipework
- Internal solder-ring
- Supplied with heavy brass collar
- Can be soldered into 22mm fitting

Code	Type	Pack	Box
BOC15	Blister-packed single	1	160
BOC15L	Loose-bagged	1	300

Type A drain-off cocks



Features & information:

- Type A
- sold in singles

Code	Type	Pack	Box
DOC15	15mm Type A	25	300
DOC15E	15mm Type A, extended	25	250
DOC12A	1/2" Type A	25	250

22mm Type A drain-off cock



Features & information:

- full rising spindle
- standard size spout
- 70% faster drain-down time

Code	Type	Pack	Box
DOC22A	22mm Type A	1	100

15mm Self-cutting drain-off cock



Features & information:

- 15mm
- re-usable

Code	Type	Pack	Box
DOC15SC	15mm self-cutting	1	130

For use when a drain-off cock cannot be found in a suitable place. Once drained, remove and fit a permanent drain-off cock for the next job.

15mm Self-cutting isolating valve



Features & information:

- 15mm
- re-usable

Code	Type	Pack	Box
IV15SC	15mm self-cutting	1	130

22mm Self-cutting tap adaptor



Features & information:

- 22mm
- re-usable
- compatible with our self cutting drain-off cocks and isolating valves

Code	Type	Pack	Box
SCTA22	22mm self-cutting	1	120

1/2" Hose union bibtaps



Features & information:

- 1/2"
- all supplied with hose tails

Code	Type	Pack	Box
HUBL	1/2" standard	1	50
HUBLDCV	1/2" double check valve	1	50
HUBLS	1/2" with removable key	1	50
HUBLSDCV	1/2" /w DCV/removable key	1	50
HUBKEY	Spare key for HUBLS/HUBLSDCV	1	50

1/2" Quarter turn hose union bibtap



Features & information:

- 1/2"
- supplied with hose tail
- quarter turn handle

Code	Type	Pack	Box
HUBLA	1/2" Quarter turn	1	60

1/2" Lockable bibtap with lever handle



Features & information:

- 1/2"
- supplied with hose tail
- quarter turn handle
- lockable via padlock (padlock not included)

Code	Type	Pack	Box
HUBLOCK	1/2" Quarter turn, lockable	1	50

1/2" Wallplate tubes with backplates



Features & information:

- 1/2"
- supplied with 3-hole backplate
- supplied with length of copper pipe

Code	Size	Pack	Box
WPT350	350mm	1	25
WPT600	600mm	1	25

15/22mm Pressure reducing valve



Features & information:

- two sizes in 1
- supplied with 10 bar gauge
- supplied with reducing inserts for 22-15mm

Code	Size	Pack	Box
PRV1522	22mm with 15mm reducers	1	12

Pressure gauge, bottom entry



Features & information:

- 1/4" connection
- 0 - 10 Bar
- bottom entry

Code	Type	Pack	Box
PG	1/4" bottom entry, 10 Bar	1	100

1/2" F+F Pressure relief valves



Features & information:

- 1/2" F+F connection

Code	Size	Pack	Box
PRV3	3 Bar, 1/2" F+F	1	100
PRV6	6 Bar, 1/2" F+F	1	100
PRV3G	3 Bar, 1/2" F+F /w gauge	1	

15mm Auto air vent



Features & information:

- 15mm
- max pressure: 10 Bar
- max. temperature: 100°C

Code	Size	Pack	Box
15AAV	15mm	1	96

22mm Automatic bypass valves



Features & information:

- 22mm
- max. pressure: 10 Bar
- max. temperature: 100°C
- adjustments 0.1 - 0.5 Bar

Code	Type	Pack	Box
ABV22	22mm Angled	1	50
ABV22S	22mm Straight	1	50

Universal cylinder flanges



Features & information:

Threaded:

- 1" male to cylinder
- 1" top outlet to vent
- 3/4" side outlet to shower

Compression:

- 1" male to cylinder
- 28mm top outlet to vent
- 22mm side outlet to shower

Code	Type	Pack	Box
UCF	1" vent, 3/4" shower	1	30
UCF2822	28mm vent, 22mm shower	1	30

Long brass running nipples



Features & information:

- BSP thread
- available in 3 sizes
- sold in singles

Code	Size	Pack	Box
BRN412	1/2" x 4" long	10	200
BRN612	1/2" x 6" long	10	120
BRN434	3/4" x 4" long	10	120

Wide flanged brass backnuts



Features & information:

- BSP thread
- available in 2 sizes
- sold in singles

Code	Size	Pack	Box
BBN12	1/2" x 38mm	50	700
BBN34	3/4" x 42mm	50	500

Brass fitting cap 22mm



Features & information:

- 22mm thread
- **NON-BSP**
- sold in singles

Code	Size	Pack	Box
BFC22	22mm	10	500

For blanking off 22mm valves and fittings.

Hex brass multi adaptor



Features & information:

- 3/4" M nipples
- 1/2" female
- 5/8" female
- sold in singles

Code	Size	Pack	Box
345812A	3/4" M x 5/8" F x 1/2" F	25	

Various uses; extending a 1/2" male thread, converting to 3/4" male, and adapting old-style 5/8" outside taps to 3/4".

EXPANSION VESSEL BAR KIT

The expansion vessel bar kit is the perfect all-in-one fixing solution for expansion vessels up to 25 litres. Each kit comes supplied with:

- 3/4" thread for direct expansion vessel connection
- Manual 1/2" air vent
- Expansion vessel service valve
- 3 Bar pressure relief valve with gauge
- 15mm system inlet
- Wall fixing backplate



Code	Product	Pack	Box
EVBARKIT	Complete bar kit	1	4
EVSRV	Service valve only	1	25

EXPANSION VESSEL SERVICE VALVE

The expansion vessel service valve allows an expansion vessel to be isolated for servicing/ replacement, without having to drain the whole system. Each valve comes with:

- Locking wire, to identify valve use
- Anti-temper lever
- Swivel drain point
- 3/4" swivel nut connection
- Washer



PERFECT PUMP VALVES

The highest quality central heating pump valves on the market. Our 22mm and 28mm valves are designed with tee handles, whilst the 35mm come supplied with lever handles, ensuring your valves will never seize up.

All valves are nickel-plated and 16 bar rated, and the full-bore design ensures 100% shut-off, with no letting by. Each valve is also designed with side flats for ease of installation, and each pair is supplied with quality rubber washers.



Perfect Pump Valves - tee handle



- Features & information:**
- 16 Bar rated
 - supplied with tee handles
 - full bore
 - 100% shut-off
 - rubber washers
 - flats to tighten
 - supplied in pairs

Code	Type	Pack	Box
PPV22	22mm, tee handle	1 pair	20 pair
PPV28	28mm, tee handle	1 pair	20 pair

Perfect Pump Valves - lever handle



- Features & information:**
- 16 Bar rated
 - supplied with lever handle
 - full bore
 - 100% shut-off
 - rubber washers
 - flats to tighten
 - supplied in pairs

Code	Type	Pack	Box
LPV35	35mm, lever handle	1 pair	10 pair

Spare rubber washer



- Features & information:**
- 1" 1/2
 - rubber
 - sold in singles

Code	Type	Pack	Box
PPVW	1" 1/2 rubber	50	

Pump brackets



- Features & information:**
- one-screw fixing bracket for pump valve pipework
 - steel with rubber lining, for noise reduction
 - sold in singles

Code	Size	Pack	Box
PB22	22mm	10	100
PB28	28mm	10	100

DRY TRAP

TUNDISH

Type AA back-flow device; a combined tundish and waste trap, saving time and cost on installations. The specially-designed seal prevents odours or gases from entering the building, whilst still allowing discharged water to be conveyed to waste safely.

The tundish operates under full-bore discharge or with only a few drops. Ideal for use with an unvented water heater or boiler relief valve discharge.



Combined tundish and waste trap ●

Type AA back-flow prevention ●

Operates under full-bore discharge or just a few drips ●

Available with 22mm or 32mm outlets ●

Size	15mm x 22mm	15mm x 32mm
Inlet	15mm	15mm
Outlet	22mm	32mm
Max. temp.	100°C	100°C
Max flow rate	25L/minute (with no restrictions)	
G3 installation flow rate	Up to 18L/minute	Up to 25L/minute
Diameter	50mm	54mm
Height	136mm	146mm
Code	TUND1522	TUND1532

Lever ball valves



Features & information:

- full bore



Code	Size	Handle	Use	Pack	Box
LBV15B	15mm	Blue	Water	1	50
LBV22B	22mm	Blue	Water	1	40
LBV28B	28mm	Blue	Water	1	25
LBV35B	35mm	Blue	Water	1	17
LBV42B	42mm	Blue	Water	1	8
LBV54B	54mm	Blue	Water	1	4
LBV15R	15mm	Red	Water	1	50
LBV22R	22mm	Red	Water	1	40
LBV28R	28mm	Red	Water	1	25
LBV35R	35mm	Red	Water	1	17
LBV42R	42mm	Red	Water	1	8
LBV54R	54mm	Red	Water	1	4
LBV15Y	15mm	Yellow	Gas	1	50
LBV22Y	22mm	Yellow	Gas	1	40
LBV28Y	28mm	Yellow	Gas	1	25
LBV35Y	35mm	Yellow	Gas	1	17
LBV42Y	42mm	Yellow	Gas	1	8
LBV54Y	54mm	Yellow	Gas	1	4

Butterfly ball valves



Features & information:

- full bore

Code	Size	Handle	Pack	Box
BBV15B	15mm	Blue	1	100
BBV15R	15mm	Red	1	100
BBV22B	22mm	Blue	1	60
BBV22R	22mm	Red	1	60
BBV28B	28mm	Blue	1	30
BBV28R	28mm	Red	1	30

Test point ball valves, for gas



Features & information:

- for gas
- full bore
- integral test point
- sold in singles

Code	Product	Pack	Box
TPBV15	15mm valve with test point	10	
TPBV22	22mm valve with test point	10	
TPN18	1/8" test point nipple	50	

Mini ball valves, for gas/water/oil



Features & information:

- for water/gas/oil
- full bore
- supplied with handles
- sold in singles

Code	Size	Pack	Box
MBV08	8mm	10	
MBV10	10mm	10	
MBV15	15mm	10	
MBV1508	15mm x 8mm	10	
MBV1510	15mm x 10mm	10	

Washing machine valves



Features & information:

- supplied with blue & red handles
- sold in singles

Code	Size	Pack	Box
WMVS	15mm x 3/4" straight	10	150
WMVA	15mm x 3/4" angled	10	150
WMVT	15mm x 3/4" tee	10	80

Dual-appliance washing machine valve



Features & information:

- dual-appliance design, with one 15mm inlet and two 3/4" outlets
- allows two appliances to be run off one pipe supply

Code	Size	Pack	Box
DAV15	15mm x 3/4", dual tee	1	100

Brass nickel-plated Y piece



Features & information:

- 3/4" M x 3/4" F swivel
- durable brass, nickel plated
- supplied with rubber washer
- sold in singles

Code	Size	Pack 1	Pack 2	Box
WMYCP	3/4"	1	10	100

3/4" Plastic washing machine cap



Features & information:

- 3/4"
- supplied with rubber washer
- ideal for site-work etc.
- sold in singles

Code	Size	Pack 1	Pack 2	Box
WMVCAP	3/4"	1	10	

Jeeves & Hudson

The Posh Service Valve Range

Jeeves valves



Features & information:

- polished chrome
- 1/4 turn ceramic discs
- supplied with grey indices
- supplied with metal collar

Code	Type	Pack	Box
J1238	1/2" M x 3/8" MI, service	1	100
J1212	1/2" M x 1/2" MI, service	1	100
J1234	1/2" M x 3/4" MI, appliance	1	100

Hudson valves



Features & information:

- polished chrome
- 1/4 turn ceramic discs
- supplied with grey indices
- supplied with metal collar

Code	Type	Pack	Box
H1238	1/2" M x 3/8" MI, service	1	100
H1212	1/2" M x 1/2" MI, service	1	100
H1234	1/2" M x 3/4" MI, appliance	1	100

Angled isolating valve



Features & information:

- 15mm chrome
- heavy pattern

Code	Size	Pack	Box
BLA15	15mm	1	100

Isolating valve tee

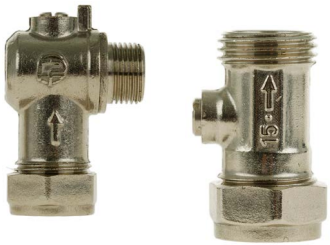


Features & information:

- 15mm chrome
- supplied with handle
- sold in singles

Code	Size	Pack	Box
IVT15	15mm	10	70

Flat-face isolating valves



Features & information:

- 15mm chrome
- available in 1/2" and 3/8"
- available in angled/straight
- sold in singles

Code	Size	Pack	Box
IVF38S	15mm x 3/8" straight	10	100
IVF12S	15mm x 1/2" straight	10	100
IVF38A	15mm x 3/8" angled	1	100
IVF12A	15mm x 1/2" angled	1	100

15mm isolating valves designed to provide a flat face for flexible hoses with swivel nut connections. This prevents damage to the washers on flexible hoses, typically caused by chamfered edges on standard isolating valves, thus preventing leaks.

Gas meter unions



Features & information:

- two sizes in 1; 22mm/28mm
- available with either plain or grooved shanks
- sold in singles

Code	Type	Pack	Pack 2	Box
GMU22-28	22/28mm, plain shank	N/A	1	140
GMU22-28G	22/28mm, grooved	1	10	120

22-15mm Reducing stopcock



Features & information:

- reduces 22mm to 15mm
- can also be used with 3/4" olives
- sold in singles

Code	Size	Pack	Box
SC2215	22mm x 15mm CuxCu	1	40

Repair slip couplings



Features & information:

- burst pipe slip connectors
- available in two sizes
- sold in singles

Code	Size	Pack	Box
15C1REP	15mm x 80mm long	10	150
22C1REP	22mm x 80mm long	5	80

Wall mounted bath filler/bath shower mixer extension



Features & information:

- 3/4" M+F
- 40mm long
- polished chrome tap finish
- sold in singles

Code	Size	Pack 1	Pack 2	Box
MFE34C	3/4" M+F x 40mm long	1	10	150

Used to extend wall-mounted bath fillers or bath shower mixers off the wall.

MONOBLOC TAIL ADAPTORS

When fitting a flexible hose swivel nut directly on to an isolating valve, the chamfered edges on the valve can cut into the washer, causing damage and potentially causing a leak.

Our Monobloc Tail Adaptors can be fitted straight into a 15mm isolating valve, creating a flat face for the flexible hose swivel nut, thus preventing damage and leaks. This is also a cost-effective alternative to fitting a separate length of pipe with a MI fitting.

Available in two sizes (1/2" and 3/8"), each size is available in loose bags of 10, or in blister-packed pairs for display.



Code	Size	Type	Pack	Box
1538A	15mm x 3/8"	Loose bagged	10	600
1512A	15mm x 1/2"	Loose bagged	10	600
1538APR	15mm x 3/8"	Blister pair	1 pair	168 pair
1512APR	15mm x 1/2"	Blister pair	1 pair	144 pair

Flexible hoses with brass shanks



Features & information:

- all supplied with 15mm brass shank ends
- 300mm long



Code	Connections	Length	Pack	Box
FTC15S	1/2" swivel x 15mm shank	300mm	1	100
FTCE15	15mm comp. x 15mm shank	300mm	1	100
FSA15	15mm shank x 15mm shank	300mm	1	100

Brass shank ends fit into compression, pushfit fittings or isolating valves.

Flexible monobloc tails with brass shanks



Features & information:

- all supplied with 15mm brass shank ends
- 300mm long

Code	Connections	Length	Pack	Box
FMT10S	M10 x 15mm shank	300mm	1 pair	60 pairs
FMT12S	M12 x 15mm shank	300mm	1 pair	60 pairs

Flexible monobloc tails with swivel nuts



Features & information:

- available with 1/2" or 3/8" threads
- 300mm & 500mm lengths

Code	Connections	Length	Pack	Box
MBT10	M10 x 1/2" swivel	300mm	1 pair	60 pair
MBT12	M12 x 1/2" swivel	300mm	1 pair	60 pair
MBT10L	M10 x 1/2" swivel	500mm	1 pair	60 pair
MBT12L	M12 x 1/2" swivel	500mm	1 pair	60 pair
MBT1038	M10 x 3/8" swivel	300mm	1 pair	60 pair
MBT1238	M12 x 3/8" swivel	300mm	1 pair	60 pair
MBT1038L	M10 x 3/8" swivel	500mm	1 pair	60 pair
MBT1238L	M12 x 3/8" swivel	500mm	1 pair	60 pair

Gas catering hoses



Features & information:

- delivered in a sealed sleeve ready for use
- supplied with retaining lanyard

Code	ID	Length	Pack	Box
CAH12-100	1/2"	1m	1	8
CAH12-150	1/2"	1.5m	1	8
CAH34-100	3/4"	1m	1	8
CAH34-150	3/4"	1.5m	1	8

Constructed from 321 stainless steel corrugated inner hose and sleeved with non-chlorinated, easy-clean yellow cover for cleanliness and corrosion resistance. Fitted with a carbon steel BSP tapered hexagonal male thread, and a brass quick-release rotary coupling (valve), to connect to a gas supply. Manufactured in accordance with BS6173:2001 and BS669-2:1997.

HOBFLEX flexible gas hob connectors



Features & information:

- 1m length of EN15266 semi-rigid pipe
- 30cm of self-amalgamating tape
- 15mm x DN15 connector

Code	Product	Pack	Box
HFLEX	Hose kit	1	
HFLEX-2	Hose kit /w test point ball valve	1	

HOBFLEX allows quick and easy connection to gas hobs, saving time versus traditional methods of rigid pipework connections. Requiring no special tools, HOBFLEX provides flame-free installation with no flux and no system contaminants. Manufactured and approved to EN15266:2007 and kitemarked and DGGW approved (KM 646363); the HOBFLEX is suitable for both NG and LPG, and can be cut to size.

Munsen rings & backplates



Features & information:

- M10
- available in brass and chrome
- sold in singles



M10 extension posts



Features & information:

- M10 M+F
- available in brass and chrome
- sold in singles

Brass and chrome schoolboard clips



Features & information:

- pressed brass
- available in brass and chrome
- sold in singles



Code	Size	Finish	Pack	Box
MR15	15mm	Brass	50	900
MR22	22mm	Brass	50	700
MR28	28mm	Brass	25	450
MR35	35mm	Brass	25	300
MR42	42mm	Brass	25	250
MR54	54mm	Brass	10	150
MR15C	15mm	Chrome	50	900
MR22C	22mm	Chrome	50	700
MR28C	28mm	Chrome	25	450
MR35C	35mm	Chrome	25	300
MR42C	42mm	Chrome	25	250
MR54C	54mm	Chrome	10	150

Code	Size	Finish	Pack	Box
MIBP	M10 Male	Brass	50	800
FIBP	M10 Female	Brass	100	1,000
MIBPC	M10 Male	Chrome	50	800
FIBPC	M10 Female	Chrome	100	1,000

Code	Size	Finish	Pack	Box
MIBPE	M10 M+F x 14mm	Brass	50	1,800
MIBPEC	M10 M+F x 14mm	Chrome	50	1,800

M10 x 14mm extension posts, used to extend pipework off the wall. Ideal when using thick lagging etc. Can also be used as a single-screw back plate.

Code	Size	Finish	Pack	Box
SBC15	15mm	Brass	50	800
SBC22	22mm	Brass	50	500
SBC28	28mm	Brass	25	300
SBC35	35mm	Brass	20	250
SBC42	42mm	Brass	10	150
SBC54	54mm	Brass	10	100
SBC15C	15mm	Chrome	50	800
SBC22C	22mm	Chrome	50	500
SBC28C	28mm	Chrome	25	300
SBC35C	35mm	Chrome	20	250
SBC42C	42mm	Chrome	10	150
SBC54C	54mm	Chrome	10	150

Rubber lined pipe clips



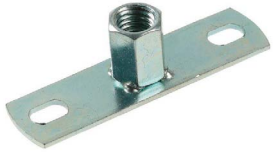
Features & information:

- dual boss, M8/M10
- steel/rubber
- supplied with retaining washers
- sold in singles



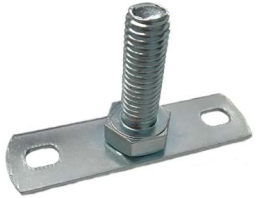
Code	Size	Pack	Box
EURO15	14-19mm	1	230
EURO22	20-25mm	1	220
EURO28	26-31mm	1	180
EURO35	32-36mm	1	140
EURO42	38-43mm	1	200
EURO48	47-51mm	1	150
EURO54	53-58mm	1	150
EURO60	60-64mm	1	150
EURO70	68-72mm	1	100
EURO75	75-80mm	1	100
EURO85	81-86mm	1	100
EURO90	87-92mm	1	100
EURO98	99-105mm	1	100
EURO108	109-112mm	1	50
EURO125	125-130mm	1	50
EURO150	148-152mm	1	50
EURO160	159-166mm	1	50

Steel backplates for rubber lined clips



Features & information:

- steel
- sold in singles



Code	Size	Pack	Box
EUROBP	M8/M10 Female	50	500
EUROBPM	M10 Male	50	400

M10 studding & fittings



Features & information:

- M10
- these products only sold in pack quantities



Code	Product	Pack	Box
ST10	M10 x 1m stud bar	25	
ST10-N	M10 nut	10	
ST10-W	M10 washer	10	

Plastic hinge clips



Features & information:

- pure white
- retrofit-able with other brands
- sold in pack quantities

Code	Product	Pack	Box
TS15	15mm single hinge	100	4,500
TS22	22mm single hinge	100	2,300
TS28	28mm single hinge	50	1,800
SBLK	Spacer block	100	4,000
TD15	15mm double hinge	50	2,200
TD22	22mm double hinge	50	1,000

Plastic masonry nail clips



Features & information:

- sold in pack quantities

Code	Size	Pack	Box
NCW10	10mm	100	4,500
NCW15	15mm	100	2,300
NCW22	22mm	100	1,800
NCW28	28mm	100	4,000

Plastic one-piece pipe collars



Features & information:

- one-piece
- 110mm available in black
- sold in singles



Code	Size	Finish	Pack	Box
PC10W	10mm	White	25	1,950
PC15W	15mm	White	25	1,300
PC22W	22mm	White	25	800
PC28W	28mm	White	25	800
PC35W	35mm	White	5	600
PC42W	42mm	White	5	400
PC110W	110mm	White	1	120
PC10C	10mm	Chrome	25	1,950
PC15C	15mm	Chrome	25	1,300
PC22C	22mm	Chrome	25	800
PC28C	28mm	Chrome	25	800
PC35C	35mm	Chrome	5	600
PC42C	42mm	Chrome	5	400
PC110C	110mm	Chrome	1	120
PC110B	110mm	Black	1	120

Basin fixing bolts



Features & information:

- 2 bolts
- 2 wall plugs
- 2 threaded nylon nuts

Code	Size	Pack	Box
PFBM10	M10 x 120mm	1 pair	100 pairs

Pan fixings bolts



Features & information:

- 2 screws
- 2 wall plugs
- 2 white caps
- 2 chrome caps

Code	Product	Pack	Box
PPFS	Pan fixing bolt pairs	1 pair	300 pairs

L-bracket pan fixing kits



Features & information:

- 2 L-brackets
- 2 screws
- 2 bolts
- 2 wall plugs
- 2 washers
- 2 white caps
- 2 chrome caps

Code	Product	Pack	Box
PPFK	L-bracket pan fixing kits	1 kit	50 kits

ICECAP FREEZE KITS

IceCap freeze kits provide a problem-solving alternative to others on the market. Patented design with integral temperature gauges in the reusable jackets, these freeze kits allow the user to monitor the thawing point of the pipe, preventing gas wastage and removing guesswork.



Temperature gauge removes guesswork/wastage ●

One 425ml can does 2 x 15mm pipes/1 x 28mm pipe ●

Even-freeze technology for efficient freeze along sleeve ●

Patented reusable jackets with integral temperature gauges ●

Suitable for copper, steel and plastic pipes ●

Code	Product	Pack	Box
FREEZEKIT	1 x 425ml can spray 2 x reusable jackets	1	10
FREEZECAN	425ml can freeze spray	1	10



CONTACT INFORMATION

PHONE	01635 283 055
SALES	sales@robpond.com
ACCOUNTS	accounts@robpond.com
MARKETING	marketing@robpond.com
RETURNS	returns@robpond.com
ADDRESS	Unit 2, Glenmore Trade Park, Andover, Hampshire, SP10 4EY
WEBSITE	www.robpond.com

OPENING HOURS

8am - 4pm | Monday to Friday

ORDERING INFORMATION

NEXT-DAY DELIVERY | Orders placed before 12pm in zones A+B

TWO-DAY DELIVERY | Orders placed before 12pm in zones C+D

Zone	Minimum order	Below minimum order carriage charge
A+B	£100 + vat	£8 + vat
C	£300 + vat	£15 + vat
D	£400 + vat	£20 + vat



ADDITIONAL DELIVERY OPTIONS

- Next-day by 12:00
- Next-day by 10:30
- Next-day by 09:00
- Saturday by 12:00
- Saturday by 10:30
- Saturday by 09:00
- Palletised deliveries
- Direct-to-site deliveries

Contact for prices

NOTES & PRICE LIST

Blank area for notes and price list entries, consisting of 12 horizontal gray bars.



rob pond

INDEPENDENT DISTRIBUTOR TO THE PLUMBING & HEATING INDUSTRY

PRODUCT GUIDE

2023

www.robpond.com

ISSUE No. 15